



Great Lakes Water Supply Program CONSTRUCTION NOTIFICATION

Friday, June 3, 2022

Locations noted below as **NEW** indicates new entries in this Construction Notification
Locations noted below as **UPDATE** indicates updated information has been provided in this Construction Notification

Community Construction Impact

City of Waukesha

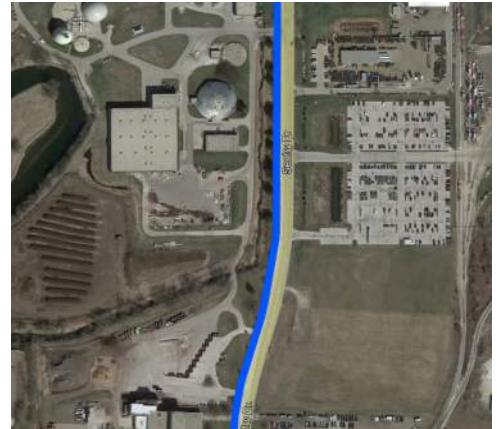
UPDATE **Where:** Sentry Drive from Philip Drive to Chapman Drive

When: May 23, 2022

Duration: 6-weeks

General Description: Return Flow Pipeline – Open Cut

Notes: 2-way vehicular traffic will be maintained with lane restrictions.
All local access will be maintained.



Where: E. Broadway at Les Paul Parkway

When: May 21, 2022

Duration: 4-weeks

General Description: BPS Discharge Pipeline – Trenchless Crossings

Notes: 2-way vehicular traffic will be maintained with lane restrictions.
All local access will be maintained.



City of Waukesha, Village of Waukesha

UPDATE **Where:** Les Paul Parkway from S. West Avenue to 1,750' south of E. Sunset Drive

When: January 3, 2022

Duration: 27-weeks

General Description: Return Flow Pipeline – Open Cut

Notes: 2-way vehicular traffic will be maintained with lane restrictions.
All local access will be maintained.



UPDATE **Where:** Les Paul Parkway from 1,750 south of E. Sunset Drive to E. Sunset Drive

When: December 8, 2021

Duration: 29-weeks

General Description: Return Flow Pipeline – Trenchless Crossing & Open Cut

Notes: 2-way vehicular traffic will be maintained with lane restrictions on Les Paul Parkway.
All local access will be maintained.



City of New Berlin

UPDATE **Where:** WisDOT I-43 from Racine Court to East of Calhoun Road

When: April 11, 2022

Duration: 14-weeks

General Description: Return Flow Pipeline – Open Cut & Trenchless Crossings

Notes: All local access will be maintained I-43.



UPDATE **Where:** Moorland Road from Westridge Drive to College Avenue

When: May 16, 2022

Duration: 4-Weeks

General Description: Return Flow Pipeline – Open Cut Restoration

Notes: 2-way traffic will be maintained with lane restrictions and flagging.
All local access will be maintained.



City of Muskego

UPDATE **Where:** Moorland Road from College Avenue to Janesville Road

When: May 9, 2022

Duration: 4-weeks

General Description: Return Flow Pipeline – Open Cut Restoration

Notes: 2-way traffic will be maintained with lane restrictions and flagging.
All local access will be maintained.



UPDATE **Where:** Moorland Road from Janesville Road to Woods Road

When: May 9, 2022

Duration: 4-weeks

General Description: Return Flow Pipeline – Open Cut Restoration

Notes: Moorland Road from Sandalwood Drive to Woods Road will be closed to southbound through traffic, on June 1st for 2-weeks.
See greatwateralliance.com for detour information.
Local traffic will be maintained with lane restrictions and flagging.
All local access will be maintained.



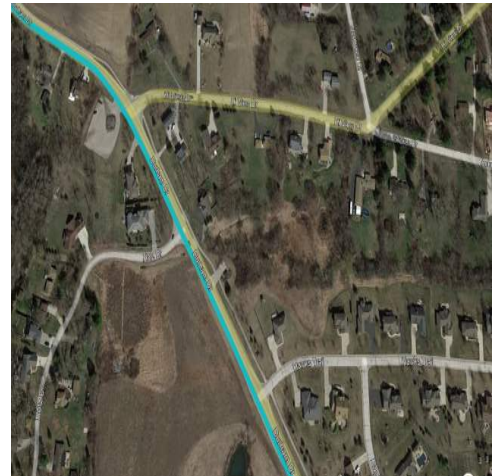
UPDATE **Where:** Durham Drive from Schultz Lane to Hawks Trail

When: March 7, 2022

Duration: 10-weeks

General Description: Return Flow Pipeline – Open Cut Restoration

Notes: 2-way traffic will be maintained with lane restrictions and flagging for local traffic.
Single lane closure with flagging during work hours.
All local access will be maintained.



UPDATE Where: N. Cape Road from Boxhorn Drive to Ryan Road

When: June 13, 2022

Duration: 1-week

General Description: Return Flow Pipeline – Water Service Repairs

Notes: 2-way traffic will be maintained with lane restrictions and flagging.
All local access will be maintained.



City of Franklin, Milwaukee County

UPDATE Where: W. Ryan Road from W. Loomis Rd. to 92nd Street

When: February 28, 2022

Duration: 18-weeks

General Description: Return Flow Pipeline – Open Cut

Notes: 2-way traffic will be maintained with lane restrictions and flagging.
All local access will be maintained.



UPDATE Where: Ryan Road from 92nd Street to St. Martins Road

When: March 21, 2022

Duration: 12-weeks

General Description: Return Flow Pipeline – Trenchless Crossing

Notes: 2-way traffic will be maintained with lane restrictions and flagging.
All local access will be maintained.



Where: Ryan Road (STH 100) from St. Martins Road to Root River (west of 60th Street)

When: March 7, 2022

Duration: 8-weeks

General Description: Return Flow Pipeline – Restoration

Notes: 2-way traffic will be maintained with lane restrictions.
All local access will be maintained.



UPDATE

Where: Ryan Road (STH 100) at Root River (west of 60th Street)

When: Summer 2022

Duration: TBD

General Description: Return Flow Pipeline – Trenchless Crossing

Notes: 2-way traffic will be maintained with lane restrictions.
All local access will be maintained.



Where: 60th Street from Ryan Road (STH 100) to Oakwood Road

When: April 11, 2022

Duration: 6-weeks

General Description: Return Flow Pipeline – Restoration

Notes: 2-way traffic will be maintained with lane restrictions.
All local access will be maintained.



Where: Oakwood Road

When: May 17, 2021

Duration: 28-months

General Description: Return Flow Pipeline – Outfall Building



City of West Allis

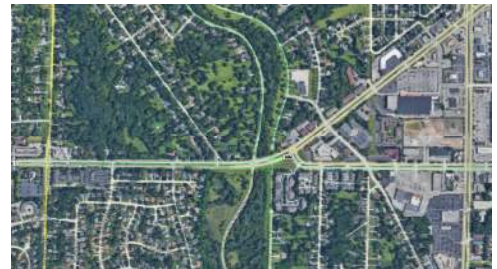
Where: W. Oklahoma Avenue from 124th Street to 108th Street

When: Spring 2022

Duration: TBD

General Description: Water Supply Pipeline – Open Cut and Trenchless

Notes: All local access will be maintained.



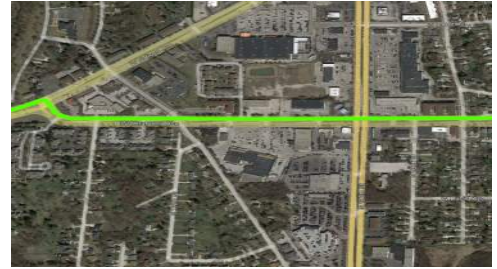
UPDATE **Where:** W. Oklahoma Avenue from 114th Street to 108th Street/STH-100

When: May 9, 2022

Duration: 8-weeks

General Description: Water Supply Pipeline – Restoration

Notes: 2-way traffic will be maintained with lane restrictions and flagging.
All local access will be maintained.



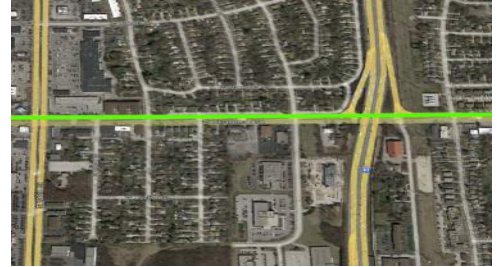
UPDATE **Where:** W. Oklahoma Avenue from 107th Street to Zoo Freeway (I-41)

When: June 13, 2022

Duration: 8-weeks

General Description: Water Supply Pipeline – Restoration

Notes: 2-way traffic will be maintained with lane restrictions and flagging.
I-41 southbound exit to W. Oklahoma Avenue will be closed through traffic, on June 20th for 2-weeks.
See greatwateralliance.com for detour information.
All local access will be maintained.



City of Milwaukee

UPDATE **Where:** W. Oklahoma Avenue from S. 74th St. to S. 76th St.

When: January 3, 2022

Duration: 24-weeks

General Description: Water Supply Pipeline – Open Cut and Jack & Bore

Notes: 2-way traffic will be maintained with lane restrictions and flagging.
All local access will be maintained.



This historic project will bring much needed water to Waukesha, and the Great Water Alliance is committed to completing the work in the most efficient and least disruptive ways possible. Thank you for your patience and cooperation during this construction.



Using Great Lakes Water the Right Way

www.greatwateralliance.com