



# Great Lakes Water Supply Program CONSTRUCTION NOTIFICATION

Friday, April 15, 2022

Locations noted below as **NEW** indicates new entries in this Construction Notification  
Locations noted below as **UPDATE** indicates updated information has been provided in this Construction Notification

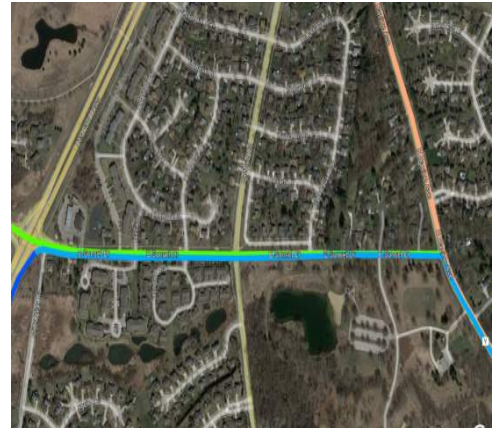
## Community Construction Impact

### City of Waukesha

**UPDATE** **Where:** Sentry Drive at Clean Water Plant  
**When:** January 31, 2022  
**Duration:** 14-weeks  
**General Description:** Return Flow Pipeline – Trenchless  
**Notes:** 2-way vehicular traffic will be maintained with lane restrictions and flagging.  
All local access will be maintained.



**UPDATE** **Where:** Sunset Drive at Les Paul Parkway  
**When:** April 25, 2022  
**Duration:** 2-weeks  
**General Description:** Return Flow Pipeline – Trenchless Crossing  
**Notes:** 2-way vehicular traffic will be maintained with lane restrictions.  
All local access will be maintained.



**UPDATE** **Where:** E. Broadway at Les Paul Parkway  
**When:** May 9, 2022  
**Duration:** 4-weeks  
**General Description:** BPS Discharge Pipeline – Trenchless Crossings  
**Notes:** 2-way vehicular traffic will be maintained with lane restrictions.  
All local access will be maintained.



## City of Waukesha, Village of Waukesha

<b>UPDATE</b>	<b>Where:</b>	Les Paul Parkway from S. West Avenue to 1,750' south of E. Sunset Drive
	<b>When:</b>	January 3, 2022
	<b>Duration:</b>	17-weeks
	<b>General Description:</b>	Return Flow Pipeline – Open Cut
	<b>Notes:</b>	2-way vehicular traffic will be maintained with lane restrictions. All local access will be maintained.



<b>UPDATE</b>	<b>Where:</b>	Les Paul Parkway from 1,750 south of E. Sunset Drive to E. Sunset Drive
	<b>When:</b>	December 8, 2021
	<b>Duration:</b>	22-weeks
	<b>General Description:</b>	Return Flow Pipeline – Trenchless Crossing & Open Cut
	<b>Notes:</b>	2-way vehicular traffic will be maintained with lane restrictions on Les Paul Parkway. All local access will be maintained.

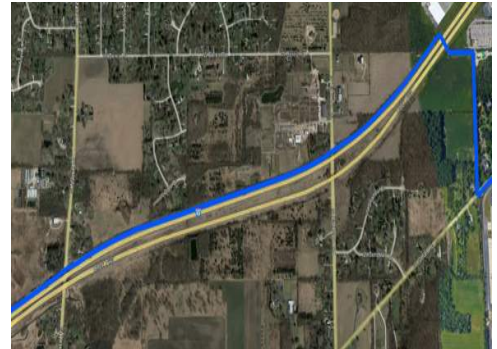


## City of New Berlin

<b>UPDATE</b>	<b>Where:</b>	WisDOT I-43 from Racine Court to Martin Road
	<b>When:</b>	April 11, 2022
	<b>Duration:</b>	6-weeks
	<b>General Description:</b>	Return Flow Pipeline – Open Cut & Trenchless Crossings
	<b>Notes:</b>	All local access will be maintained I-43.



<b>UPDATE</b>	<b>Where:</b>	WisDOT I-43 from Martin Road to East of Calhoun Road
	<b>When:</b>	January 24, 2022
	<b>Duration:</b>	15-weeks
	<b>General Description:</b>	Return Flow Pipeline – Open Cut & Trenchless Crossings
	<b>Notes:</b>	All local access will be maintained I-43.



**UPDATE** **Where:** Moorland Road from Westridge Drive to College Avenue

**When:** Spring 2022

**Duration:** TBD

**General Description:** Return Flow Pipeline – Open Cut Restoration

**Notes:** 2-way traffic will be maintained with lane restrictions and flagging.  
All local access will be maintained.



### City of Muskego

**UPDATE** **Where:** Moorland Road from College Avenue to Janesville Road

**When:** Spring 2022

**Duration:** TBD

**General Description:** Return Flow Pipeline – Open Cut Restoration

**Notes:** 2-way traffic will be maintained with lane restrictions and flagging.  
All local access will be maintained.



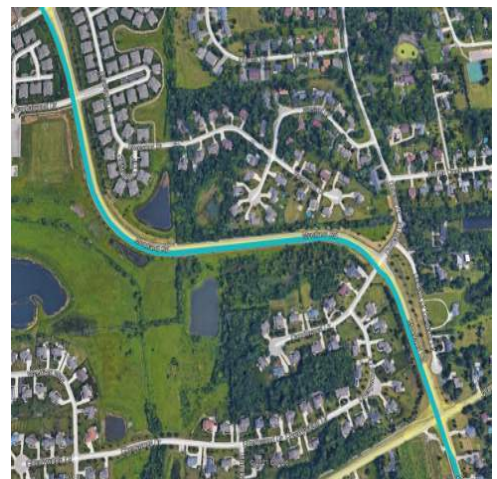
**UPDATE** **Where:** Moorland Road from Janesville Road to Woods Road

**When:** December 13, 2021

**Duration:** 16-weeks

**General Description:** Return Flow Pipeline – Open Cut Restoration

**Notes:** Moorland Road from Sandalwood Drive to Woods Road will have intermittent closures to southbound through traffic, during work hours, beginning April 4<sup>th</sup> for 6-weeks.  
See [greatwateralliance.com](http://greatwateralliance.com) for detour information.  
Local traffic will be maintained with lane restrictions and flagging.  
All local access will be maintained.



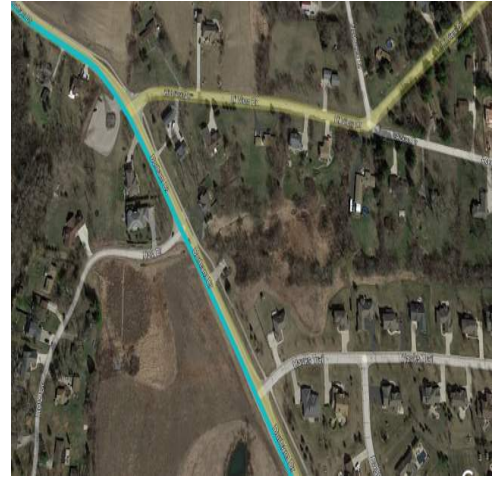
**UPDATE** **Where:** Durham Drive from Schultz Lane to Hawks Trail

**When:** March 7, 2022

**Duration:** 7-weeks

**General Description:** Return Flow Pipeline – Open Cut

**Notes:** 2-way traffic will be maintained with lane restrictions and flagging for local traffic. All local access will be maintained.



**UPDATE** **Where:** N. Cape Road from Boxhorn Drive to Ryan Road

**When:** April 25, 2022

**Duration:** 1-week

**General Description:** Return Flow Pipeline – Water Service Repairs

**Notes:** 2-way traffic will be maintained with lane restrictions and flagging. All local access will be maintained.



### City of Franklin, Milwaukee County

**UPDATE** **Where:** W. Ryan Road from W. Loomis Rd. to 92<sup>nd</sup> Street

**When:** February 28, 2022

**Duration:** 13-weeks

**General Description:** Return Flow Pipeline – Open Cut

**Notes:** 2-way traffic will be maintained with lane restrictions and flagging. S. 68<sup>th</sup> Street at W. Ryan Road will be closed to through traffic on April 28<sup>th</sup> for 2-days. All local access will be maintained.



**Where:** Ryan Road from 92<sup>nd</sup> Street to St. Martins Road

**When:** March 21, 2022

**Duration:** 4-weeks

**General Description:** Return Flow Pipeline – Trenchless Crossing

**Notes:** 2-way traffic will be maintained with lane restrictions and flagging.

All local access will be maintained.



**UPDATE** **Where:** Ryan Road (STH 100) from St. Martins Road to Root River (west of 60<sup>th</sup> Street)

**When:** March 7, 2022

**Duration:** 8-weeks

**General Description:** Return Flow Pipeline – Open Cut

**Notes:** 2-way traffic will be maintained with lane restrictions.

All local access will be maintained.



**UPDATE** **Where:** Ryan Road (STH 100) at Root River (west of 60<sup>th</sup> Street)

**When:** October 18, 2021

**Duration:** 12-months

**General Description:** Return Flow Pipeline – Trenchless Crossing

**Notes:** 2-way traffic will be maintained with lane restrictions.

HWY 100 eastbound lane west of 60<sup>th</sup> street lane closure.

All local access will be maintained.



**UPDATE** **Where:** 60<sup>th</sup> Street from Ryan Road (STH 100) to Oakwood Road

**When:** April 11, 2022

**Duration:** 6-weeks

**General Description:** Return Flow Pipeline – Restoration

**Notes:** 2-way traffic will be maintained with lane restrictions.

All local access will be maintained.



**Where:** Oakwood Road  
**When:** May 17, 2021  
**Duration:** 28-months  
**General Description:** Return Flow Pipeline – Outfall Building



**City of West Allis**

**Where:** W. Oklahoma Avenue from 124<sup>th</sup> Street to 108<sup>th</sup> Street  
**When:** Spring 2022  
**Duration:** TBD  
**General Description:** Water Supply Pipeline – Open Cut and Trenchless  
**Notes:** All local access will be maintained.



NEW

**Where:** W. Oklahoma Avenue from 114<sup>th</sup> Street to Zoo Freeway  
**When:** February 28, 2022  
**Duration:** 19-weeks  
**General Description:** Water Supply Pipeline – Open Cut and Trenchless  
**Notes:** 2-way traffic will be maintained with lane restrictions and flagging.  
 All local access will be maintained.



**City of Milwaukee**

**Where:** W. Oklahoma Avenue from S. 74<sup>th</sup> St. to S. 76<sup>th</sup> St.  
**When:** January 3, 2022  
**Duration:** 17-weeks  
**General Description:** Water Supply Pipeline – Open Cut and Jack & Bore  
**Notes:** 2-way traffic will be maintained with lane restrictions and flagging.  
 All local access will be maintained.



This historic project will bring much needed water to Waukesha, and the Great Water Alliance is committed to completing the work in the most efficient and least disruptive ways possible. Thank you for your patience and cooperation during this construction.



*Using Great Lakes Water the Right Way*

*[www.greatwateralliance.com](http://www.greatwateralliance.com)*