

Great Lakes Water Supply Program CONSTRUCTION NOTIFICATION

Friday, March 18, 2022

Locations noted below as **NEW** indicates new entries in this Construction Notification
Locations noted below as **UPDATE** indicates updated information has been provided in this Construction Notification

Community Construction Impact

City of Waukesha

UPDATE **Where:** Sentry Drive at Clean Water Plant

When: January 31, 2022

Duration: 10-weeks

General Description: Return Flow Pipeline – Trenchless

Notes: 2-way vehicular traffic will be maintained with lane restrictions and flagging.
All local access will be maintained.



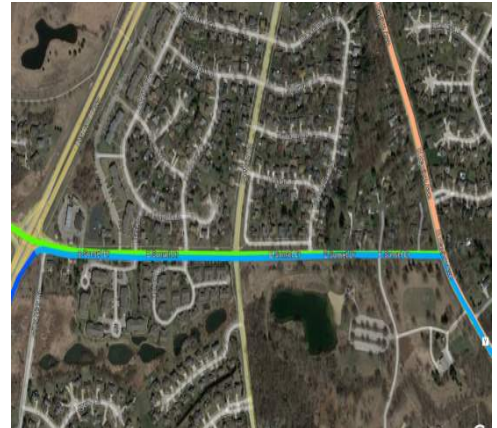
UPDATE **Where:** Sunset Drive at Les Paul Parkway

When: April 4, 2022

Duration: 4-weeks

General Description: Return Flow Pipeline – Trenchless Crossing

Notes: 2-way vehicular traffic will be maintained with lane restrictions.
All local access will be maintained.



UPDATE **Where:** E. Broadway at Les Paul Parkway

When: April 11, 2022

Duration: 4-weeks

General Description: BPS Discharge Pipeline – Trenchless Crossings

Notes: 2-way vehicular traffic will be maintained with lane restrictions.
All local access will be maintained.



City of Waukesha, Village of Waukesha

UPDATE	Where:	Les Paul Parkway from S. West Avenue to 1,750' south of E. Sunset Drive
	When:	January 3, 2022
	Duration:	14-weeks
	General Description:	Return Flow Pipeline – Open Cut
	Notes:	2-way vehicular traffic will be maintained with lane restrictions. All local access will be maintained.



UPDATE	Where:	Les Paul Parkway from 1,750 south of E. Sunset Drive to E. Sunset Drive
	When:	December 8, 2021
	Duration:	18-weeks
	General Description:	Return Flow Pipeline – Trenchless Crossing & Open Cut
	Notes:	2-way vehicular traffic will be maintained with lane restrictions on Les Paul Parkway. All local access will be maintained.

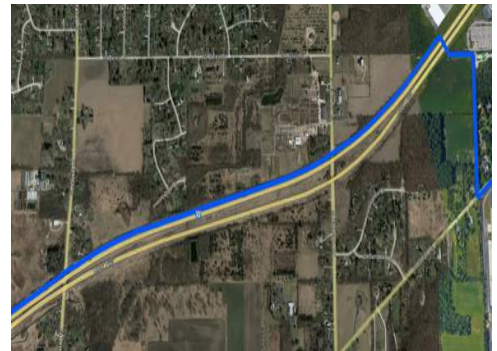


City of New Berlin

UPDATE	Where:	WisDOT I-43 from Racine Court to Martin Road
	When:	TBD
	Duration:	TBD
	General Description:	Return Flow Pipeline – Open Cut & Trenchless Crossings
	Notes:	All local access will be maintained I-43.



	Where:	WisDOT I-43 from Martin Road to east of Calhoun Road
	When:	January 24, 2022
	Duration:	11-weeks
	General Description:	Return Flow Pipeline – Open Cut & Trenchless Crossings
	Notes:	All local access will be maintained I-43.



UPDATE **Where:** Moorland Road from Westridge Drive to College Avenue

When: Spring 2022

Duration: TBD

General Description: Return Flow Pipeline – Open Cut Restoration

Notes: 2-way traffic will be maintained with lane restrictions and flagging.
All local access will be maintained.



City of Muskego

UPDATE **Where:** Moorland Road from College Avenue to Janesville Road

When: Spring 2022

Duration: TBD

General Description: Return Flow Pipeline – Open Cut Restoration

Notes: 2-way traffic will be maintained with lane restrictions and flagging.
All local access will be maintained.



UPDATE **Where:** Moorland Road from Janesville Road to Woods Road

When: December 13, 2021

Duration: 16-weeks

General Description: Return Flow Pipeline – Open Cut & Trenchless Crossing

Notes: Moorland Road from Sandalwood Drive to Woods Road will be closed to southbound through traffic on January 25th for 8-weeks. See greatwateralliance.com for detour information.
2-way traffic will be maintained with lane restrictions and flagging.
All local access will be maintained.



UPDATE Where: Durham Drive from Schultz Lane to Hawks Trail

When: March 7, 2022

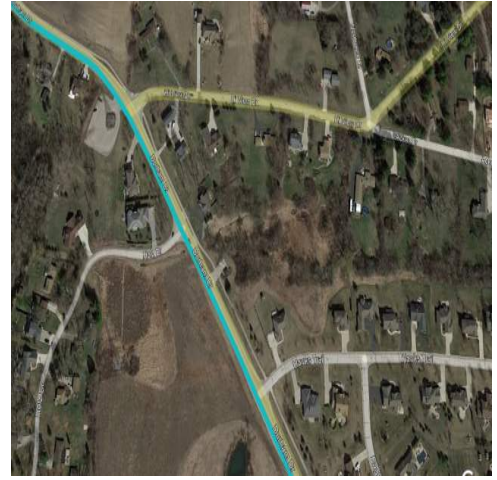
Duration: 5-weeks

General Description: Return Flow Pipeline – Open Cut

Notes: Durham Drive from Janesville Road to N. Cape Road will be closed to through traffic at Hi View Drive on March 19th for 12-days. See greatwateralliance.com for detour information.

2-way traffic will be maintained with lane restrictions and flagging for local traffic.

All local access will be maintained.



UPDATE Where: N. Cape Road from Boxhorn Drive to Ryan Road

When: March 28, 2022

Duration: 3-weeks

General Description: Return Flow Pipeline – Water Service Repairs

Notes: 2-way traffic will be maintained with lane restrictions and flagging.

All local access will be maintained.



City of Franklin, Milwaukee County

UPDATE Where: W. Ryan Road from W. Loomis Rd. to 92nd Street

When: February 28, 2022

Duration: 11-weeks

General Description: Return Flow Pipeline – Open Cut

Notes: 2-way traffic will be maintained with lane restrictions and flagging.

S. 92nd Street at W. Ryan Road will be closed to through traffic on March 22nd for 2-days.

S. 68th Street at W. Ryan Road will be closed to through traffic on April 28th for 2-days.

All local access will be maintained.



Where: Ryan Road from 92nd Street to St. Martins Road
When: March 21, 2022
Duration: 4-weeks
General Description: Return Flow Pipeline – Trenchless Crossing
Notes: 2-way traffic will be maintained with lane restrictions and flagging.
All local access will be maintained.



UPDATE **Where:** Ryan Road (STH 100) from St. Martins Road to Root River (west of 60th Street)
When: March 7, 2022
Duration: 4-weeks
General Description: Return Flow Pipeline – Open Cut
Notes: 2-way traffic will be maintained with lane restrictions.
All local access will be maintained.



UPDATE **Where:** Ryan Road (STH 100) at Root River (west of 60th Street)
When: October 18, 2021
Duration: 7-months
General Description: Return Flow Pipeline – Trenchless Crossing
Notes: 2-way traffic will be maintained with lane restrictions.
HWY 100 eastbound lane west of 60th street lane closure.
All local access will be maintained.



Where: 60th Street from Ryan Road (STH 100) to Oakwood Road
When: October 4, 2021
Duration: 20-weeks
General Description: Return Flow Pipeline – Open Cut
Notes: 2-way traffic will be maintained with lane restrictions.
All local access will be maintained.



Where: Oakwood Road
When: May 17, 2021
Duration: 28-months
General Description: Return Flow Pipeline – Outfall Building



City of West Allis

Where: W. Oklahoma Avenue from 124th Street to 108th Street
When: Spring 2022
Duration: TBD
General Description: Water Supply Pipeline – Open Cut and Trenchless
Notes: All local access will be maintained.



NEW

Where: W. Oklahoma Avenue from 114th Street to Zoo Freeway
When: February 28, 2022
Duration: 19-weeks
General Description: Water Supply Pipeline – Open Cut and Trenchless
Notes: 2-way traffic will be maintained with lane restrictions and flagging.
 All local access will be maintained.



City of Milwaukee

Where: W. Oklahoma Avenue from S. 74th St. to S. 76th St.
When: January 3, 2022
Duration: 17-weeks
General Description: Water Supply Pipeline – Open Cut and Jack & Bore
Notes: 2-way traffic will be maintained with lane restrictions and flagging.
 All local access will be maintained.



This historic project will bring much needed water to Waukesha, and the Great Water Alliance is committed to completing the work in the most efficient and least disruptive ways possible. Thank you for your patience and cooperation during this construction.



Using Great Lakes Water the Right Way

www.greatwateralliance.com