



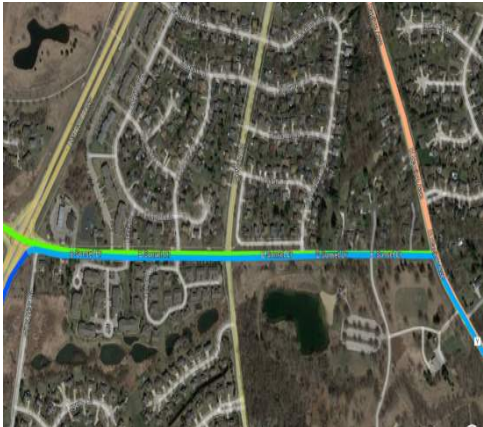
Great Lakes Water Supply Program CONSTRUCTION NOTIFICATION

Friday, February 4, 2022

Locations noted below as **NEW** indicates new entries in this Construction Notification
Locations noted below as **UPDATE** indicates updated information has been provided in this Construction Notification

Community Construction Impact

City of Waukesha

UPDATE	<p>Where: Sentry Drive at Clean Water Plant</p> <p>When: January 31, 2022</p> <p>Duration: 6-weeks</p> <p>General Description: Return Flow Pipeline – Trenchless</p> <p>Notes: 2-way vehicular traffic will be maintained with lane restrictions and flagging. All local access will be maintained.</p>	
NEW	<p>Where: E. Broadway near Les Paul Parkway</p> <p>When: February 7, 2022</p> <p>Duration: 3-weeks</p> <p>General Description: Water Supply Booster Pump Station, Ground Storage and Elevated Water Storage Tanks</p> <p>Notes: Rempe Drive at E. Broadway will be closed to through traffic on February 7th for 18-days.</p>	
UPDATE	<p>Where: Sunset Drive at Les Paul Parkway</p> <p>When: February 14, 2022</p> <p>Duration: 4-weeks</p> <p>General Description: Return Flow Pipeline – Trenchless Crossing</p> <p>Notes: 2-way vehicular traffic will be maintained with lane restrictions. All local access will be maintained.</p>	

NEW **Where:** E. Broadway near Les Paul Parkway
When: March 28, 2022
Duration: 4-weeks
General Description: BPS Discharge Pipeline – Trenchless Crossings
Notes: 2-way vehicular traffic will be maintained with lane restrictions.
 All local access will be maintained.



City of Waukesha, Village of Waukesha

UPDATE **Where:** Les Paul Parkway at S. East Avenue
When: January 10, 2022
Duration: 6-weeks
General Description: Return Flow Pipeline – Trenchless Crossings
Notes: 2-way vehicular traffic will be maintained with lane restrictions.
 All local access will be maintained.



UPDATE **Where:** Les Paul Parkway from S. West Avenue to 1,750' south of E. Sunset Drive
When: January 3, 2022
Duration: 12-weeks
General Description: Return Flow Pipeline – Open Cut
Notes: 2-way vehicular traffic will be maintained with lane restrictions.
 All local access will be maintained.

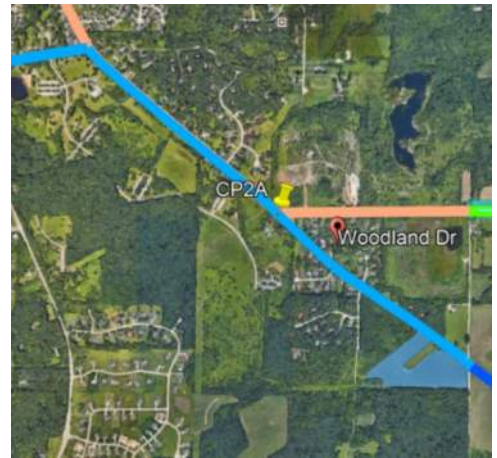


UPDATE **Where:** Les Paul Parkway from 1,750 south of E. Sunset Drive to E. Sunset Drive
When: December 8, 2021
Duration: 16-weeks
General Description: Return Flow Pipeline – Trenchless Crossing & Open Cut
Notes: 2-way vehicular traffic will be maintained with lane restrictions on Les Paul Parkway.
 All local access will be maintained.

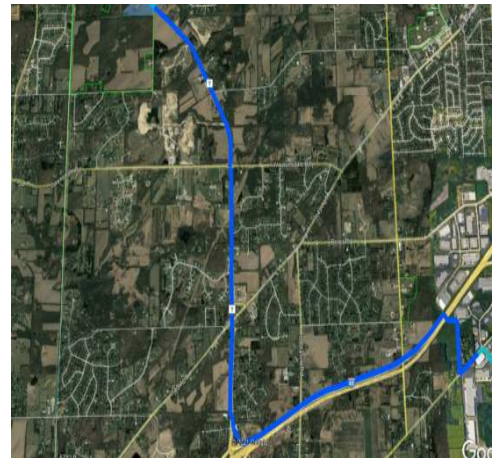


City of New Berlin

UPDATE	Where:	S. Racine Avenue from E. Sunset Drive to S. Swartz Road
	When:	January 10, 2022
	Duration:	5-weeks
	General Description:	Return Flow Pipeline – Pipe Testing
	Notes:	2-way vehicular traffic will be maintained with lane restrictions and flagging. All local access will be maintained



UPDATE	Where:	Racine Avenue from S. Swartz Road to Rock FWY (I-43)
	When:	January 10, 2022
	Duration:	5-weeks
	General Description:	Return Flow Pipeline – Pipe Testing
	Notes:	2-way vehicular traffic will be maintained with lane restrictions and flagging. All local access will be maintained



UPDATE	Where:	WisDOT I-43 from Racine Court to Martin Road
	When:	TBD
	Duration:	TBD
	General Description:	Return Flow Pipeline – Open Cut & Trenchless Crossings
	Notes:	All local access will be maintained I-43.



UPDATE	Where:	WisDOT I-43 from Martin Road to east of Calhoun Road
	When:	January 24, 2022
	Duration:	4-weeks
	General Description:	Return Flow Pipeline – Open Cut & Trenchless Crossings
	Notes:	S. Calhoun Road from W. Beres Road to S. Small Road will be closed to through traffic on February 4 th for 2-days. See greatwateralliance.com for detour information.



UPDATE **Where:** Moorland Road from Westridge Drive to College Avenue

When: October 4, 2021

Duration: 24-weeks

General Description: Return Flow Pipeline – Open Cut Restoration

Notes: 2-way traffic will be maintained with lane restrictions and flagging.
All local access will be maintained.



City of West Allis

UPDATE **Where:** W. Oklahoma Avenue from 124th Street to 108th Street

When: Spring 2022

Duration: TBD

General Description: Water Supply Pipeline – Open Cut and Trenchless

Notes: All local access will be maintained.



City of Milwaukee

UPDATE **Where:** W. Oklahoma Avenue from S. 74th St. to S. 76th St.

When: January 3, 2022

Duration: 17-weeks

General Description: Water Supply Pipeline – Open Cut and Jack & Bore

Notes: 2-way traffic will be maintained with lane restrictions and flagging.
All local access will be maintained.



City of Muskego

UPDATE	Where:	Moorland Road from College Avenue to Janesville Road
	When:	October 25, 2021
	Duration:	15-weeks
	General Description:	Return Flow Pipeline – Open Cut Restoration
	Notes:	2-way traffic will be maintained with lane restrictions and flagging. All local access will be maintained.



UPDATE	Where:	Moorland Road from Janesville Road to Woods Road
	When:	December 13, 2021
	Duration:	15-weeks
	General Description:	Return Flow Pipeline – Open Cut
	Notes:	Moorland Road from Sandalwood Drive to Woods Road will be closed to southbound through traffic on January 25 th for 25-days. See greatwateralliance.com for detour information. 2-way traffic will be maintained with lane restrictions and flagging. All local access will be maintained.



	Where:	Durham Drive from Woods Road to N. Cape Road
	When:	March 18, 2022
	Duration:	3-weeks
	General Description:	Return Flow Pipeline – Open Cut
	Notes:	Durham Drive from Janesville Road to N. Cape Road will be closed to through traffic at Hi View Drive on March 18 th for 10-days. Holz Drive at Durham Drive will be closed to through traffic on March 28 th for 11-days. See greatwateralliance.com for detour information. 2-way traffic will be maintained with lane restrictions and flagging for local traffic. All local access will be maintained.



City of Franklin, Milwaukee County

UPDATE **Where:** Ryan Road from 92nd Street to St. Martins Road

When: February 14, 2022

Duration: 4-weeks

General Description: Return Flow Pipeline – Trenchless Crossing

Notes: 2-way traffic will be maintained with lane restrictions and flagging.
All local access will be maintained.



UPDATE **Where:** W. Ryan Road from W. Loomis Rd. to S. 60th Street

When: February 21, 2022

Duration: 11-weeks

General Description: Supply Flow Pipeline – Open Cut

Notes: 2-way traffic will be maintained with lane restrictions and flagging.
S. 92nd Street at W. Ryan Road will be closed to through traffic on March 24th for 2-days.
S. 68th Street at W. Ryan Road will be closed to through traffic on April 21st for 2-days.
All local access will be maintained.



UPDATE **Where:** Ryan Road (STH 100) at Root River (west of 60th Street)

When: October 18, 2021

Duration: 24-weeks

General Description: Return Flow Pipeline – Trenchless Crossing

Notes: 2-way traffic will be maintained with lane restrictions.
HWY 100 eastbound lane west of 60th street lane closure.
All local access will be maintained.



UPDATE

Where: 60th Street from Ryan Road (STH 100) to Oakwood Road

When: October 4, 2021

Duration: 16-week

General Description: Return Flow Pipeline – Open Cut

Notes: South 60th Street from Ryan Road to Oakwood will be closed to northbound traffic on November 23rd for 74-days
Oakwood Drive east of South 60th Street will be closed to through traffic on February 7th for 2-day.
See greatwateralliance.com for detour information.
All local access will be maintained.



Where: Oakwood Road

When: May 17, 2021

Duration: 28-months

General Description: Return Flow Pipeline – Outfall Building



This historic project will bring much needed water to Waukesha, and the Great Water Alliance is committed to completing the work in the most efficient and least disruptive ways possible. Thank you for your patience and cooperation during this construction.



Using Great Lakes Water the Right Way

www.greatwateralliance.com