

Great Lakes Water Supply Program CONSTRUCTION NOTIFICATION

Friday, December 10, 2021

Locations noted below as **NEW** indicates new entries in this Construction Notification
Locations noted below as **UPDATE** indicates updated information has been provided in this Construction Notification

Community Construction Impact

City of Waukesha

Where: Sentry Drive at Clean Water Plant
When: TBD
Duration: TBD
General Description: Return Flow Pipeline – Trenchless Crossings
Notes: All local access will be maintained



Where: E. Broadway near Les Paul Parkway
When: August 2, 2021
Duration: 25-months
General Description: Water Supply Booster Pump Station, Ground Storage and Elevated Water Storage Tanks



City of Waukesha, Village of Waukesha

Where: Les Paul Parkway at S. East Avenue
When: January 24, 2022
Duration: 3-weeks
General Description: Return Flow Pipeline – Trenchless Crossings
Notes: 2-way vehicular traffic will be maintained with lane restrictions and flagging.
All local access will be maintained.



Where: Les Paul Parkway from S. West Avenue to 1,750' S. Sunset Drive
When: TBD
Duration: TBD
General Description: Return Flow Pipeline – Open Cut

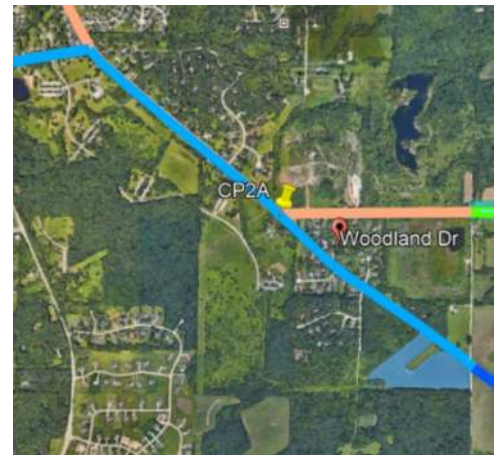


NEW **Where:** Les Paul Parkway from 1,750 south of W. Sunset Drive to W. Sunset Drive
When: December 8, 2021
Duration: 10-weeks
General Description: Return Flow Pipeline – Trenchless Crossing
Notes: 2-way vehicular traffic will be maintained with lane restrictions on Les Paul Parkway. All local access will be maintained.



City of New Berlin

UPDATE **Where:** S. Racine Avenue from E. Sunset Drive to S. Swartz Road
When: October 25, 2021
Duration: 11-weeks
General Description: Return Flow Pipeline – Open Cut
Notes: S. Swartz Drive at S. Racine Avenue to be closed to through traffic on December 10th for 2-days.
See greatwateralliance.com for detour information.
2-way vehicular traffic will be maintained with lane restrictions and flagging for local traffic.
All local access will be maintained



Where: WisDOT I-43 from Racine Court to Martin Road

When: TBD

Duration: TBD

General Description: Return Flow Pipeline – Open Cut & Trenchless Crossings

Notes: All local access will be maintained I-43.



UPDATE Where: WisDOT I-43 from Martin Road to Calhoun Road

When: December 8, 2021

Duration: 6-weeks

General Description: Return Flow Pipeline – Open Cut & Trenchless Crossings

Notes: All local access will be maintained on I-43.



UPDATE Where: Moorland Road from Westridge Drive to College Avenue

When: October 4, 2021

Duration: 9-weeks

General Description: Return Flow Pipeline – Open Cut Restoration

Notes: 2-way traffic will be maintained with lane restrictions and flagging.
West Woods Edge Road at Moorland Road will be closed on October 11th for 12-days.
All local access will be maintained.



City of West Allis

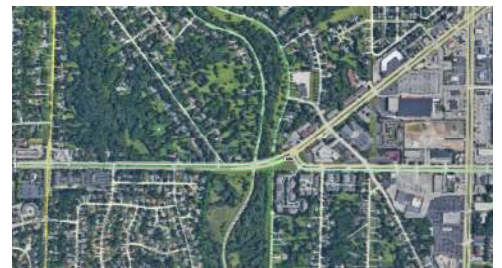
UPDATE Where: W. Oklahoma Avenue from 124th Street to 108th Street

When: Spring 2022

Duration: TBD

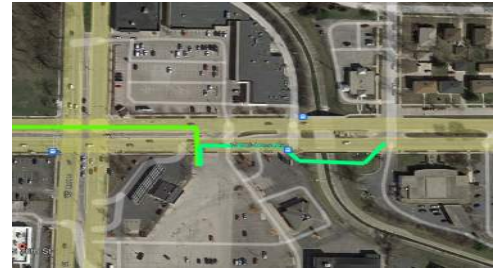
General Description: Water Supply Pipeline – Open Cut and Trenchless

Notes: All local access will be maintained.



City of Milwaukee

NEW Where:	W. Oklahoma Avenue from S. 74 th St. to S. 76 th St.
When:	January 3, 2022
Duration:	17-weeks
General Description:	Water Supply Pipeline – Open Cut and Jack & Bore
Notes:	2-way traffic will be maintained with lane restrictions and flagging. All local access will be maintained.

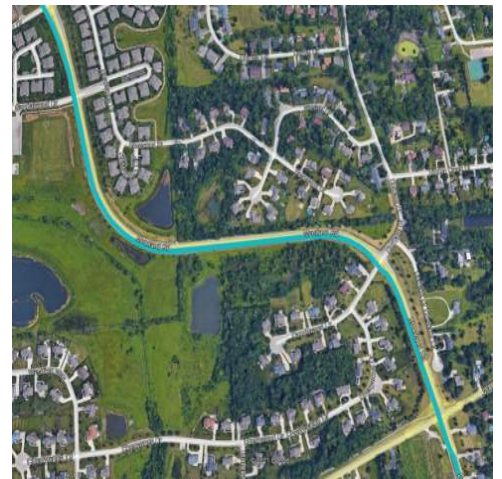


City of Muskego

UPDATE Where:	Moorland Road from College Avenue to Janesville Road
When:	October 25, 2021
Duration:	6-weeks
General Description:	Return Flow Pipeline – Open Cut Restoration
Notes:	2-way traffic will be maintained with lane restrictions and flagging. All local access will be maintained.



UPDATE Where:	Moorland Road from Janesville Road to Woods Road
When:	December 13, 2021
Duration:	5-weeks
General Description:	Return Flow Pipeline – Open Cut
Notes:	Moorland Road from Sandalwood Drive to Woods Road will be closed to southbound through traffic on January 10 th for 5-days. See greatwateralliance.com for detour information. 2-way traffic will be maintained with lane restrictions and flagging. All local access will be maintained.



Where: Durham Drive from Woods Road to N. Cape Road

When: March 18, 2022

Duration: 3-weeks

General Description: Return Flow Pipeline – Open Cut

Notes: Durham Drive from Janesville Road to N. Cape Road will be closed to through traffic at Hi View Drive on March 18th for 10-days. Holz Drive at Durham Drive will be closed to through traffic on March 28th for 11-days.

See greatwateralliance.com for detour information.

2-way traffic will be maintained with lane restrictions and flagging for local traffic.

All local access will be maintained.



City of Franklin, Milwaukee County

UPDATE Where: Ryan Road at Loomis Road/STH 36

When: August 9, 2021

Duration: 16-weeks

General Description: Return Flow Pipeline – Trenchless Crossing

Notes: 2-way traffic will be maintained with lane restrictions and flagging.

All local access will be maintained.



UPDATE Where: Ryan Road (STH 100) at Root River (west of 60th Street)

When: October 18, 2021

Duration: 9-weeks

General Description: Return Flow Pipeline – Trenchless Crossing

Notes: 2-way traffic will be maintained with lane restrictions and flagging.

HWY 100 eastbound lane west of 60th street lane closure.

All local access will be maintained.



UPDATE Where: Ryan Road from 92nd Street to St. Martins Road

When: January 4, 2022

Duration: 4-weeks

General Description: Return Flow Pipeline – Trenchless Crossing

Notes: 2-way traffic will be maintained with lane restrictions and flagging.
All local access will be maintained.



UPDATE Where: Ryan Road (STH 100) from 68th Street to 60th Street

When: December 1, 2021

Duration: 3-weeks

General Description: Return Flow Pipeline – Trenchless Crossing

Notes: 2-way traffic will be maintained with lane restrictions and flagging.
All local access will be maintained.



Where: 60th Street from Ryan Road (STH 100) to Oakwood Road

When: October 4, 2021

Duration: 16-week

General Description: Return Flow Pipeline – Open Cut

Notes: South 60th Street from Ryan Road to Oakwood will be closed to northbound traffic on November 23rd for 60-days
Airways Drive at South 60th Street will be closed on November 23rd for 15-days.
Franklin Drive at South 60th Street will be closed to on December 8th for 15-days.
Oakwood Drive at South 60th Street will be closed to northbound traffic on December 23rd for 2-day.
See greatwateralliance.com for detour information.
All local access will be maintained.



Where: Oakwood Road
When: May 17, 2021
Duration: 28-months
General Description: Return Flow Pipeline – Outfall Building



This historic project will bring much needed water to Waukesha, and the Great Water Alliance is committed to completing the work in the most efficient and least disruptive ways possible. Thank you for your patience and cooperation during this construction.



Using Great Lakes Water the Right Way

www.greatwateralliance.com