



# Great Lakes Water Supply Program CONSTRUCTION NOTIFICATION

Friday, October 8, 2021

Locations noted below as **NEW** indicates new entries in this Construction Notification  
Locations noted below as **UPDATE** indicates updated information has been provided in this Construction Notification

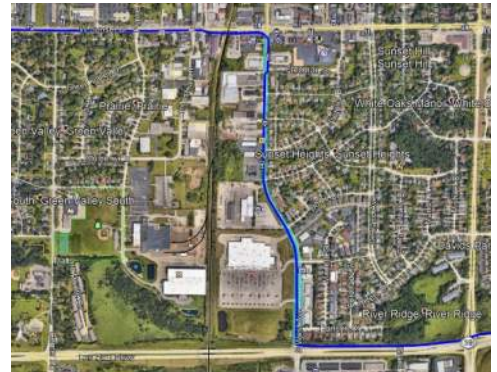
## Community Construction Impact

### City of Waukesha

**Where:** Sentry Drive at Clean Water Plant  
**When:** TBD  
**Duration:** TBD  
**General Description:** Return Flow Pipeline – Trenchless Crossings  
**Notes:** All local access will be maintained



**UPDATE** **Where:** S. West Avenue from Sunset Drive to Les Paul Parkway  
**When:** May 17, 2021  
**Duration:** 22-weeks  
**General Description:** Return Flow Pipeline – Open Cut  
**Notes:** 2-way vehicular traffic will be maintained with lane restrictions and flagging.  
S. West Avenue at Sunset Drive will be closed to through traffic on September 8<sup>th</sup> for 6-weeks.  
See [greatwateralliance.com](http://greatwateralliance.com) for detour information.  
All local access will be maintained.



NEW

**Where:** E. Broadway near Les Paul Parkway

**When:** August 2, 2021

**Duration:** 25-months

**General Description:** Water Supply Booster Pump Station, Ground Storage and Elevated Water Storage Tanks



**City of Waukesha, Village of Waukesha**

**Where:** Sunset Drive from Sentry Drive to S. West Avenue

**When:** March 10, 2021

**Duration:** 7-months

**General Description:** Return Flow Pipeline – Open Cut Restoration

**Notes:** 2-way vehicular traffic will be maintained with lane restrictions and flagging. All local access will be maintained.



UPDATE

**Where:** Les Paul Parkway at S. East Avenue

**When:** November 1, 2021

**Duration:** 3-weeks

**General Description:** Return Flow Pipeline – Trenchless Crossings

**Notes:** 2-way vehicular traffic will be maintained with lane restrictions and flagging. All local access will be maintained.



**Where:** Les Paul Parkway from S. West Avenue to 1,750' S. Sunset Drive

**When:** TBD

**Duration:** TBD

**General Description:** Return Flow Pipeline – Open Cut



**UPDATE Where:** E. Sunset Drive from Les Paul Parkway to S. Racine Avenue

**When:** June 28, 2021

**Duration:** 16-weeks

**General Description:** Return Flow Pipeline – Open Cut Restoration

**Notes:** 2-way vehicular traffic will be maintained with lane restrictions and flagging.  
All local access will be maintained



**UPDATE Where:** S. Racine Avenue from E. Sunset Drive to S. Swartz Road

**When:** October 11, 2021

**Duration:** 8-weeks

**General Description:** Return Flow Pipeline – Open Cut

**Notes:** S. Racine Avenue from Les Paul Parkway to Lawnsdale Road will be closed on October 22<sup>nd</sup> for 3-days.  
W. Coffee Road at S. Racine Avenue will be closed to through traffic on October 28<sup>th</sup> for 2-days.  
Woodland Drive at S. Racine Avenue will be closed to through traffic on November 2<sup>nd</sup> for 1-days.  
S. Racine Avenue from Les Paul Parkway to Lawnsdale Road will be closed on November 5<sup>th</sup> for 3-days.  
S. Swartz Drive at S. Racine Avenue to be closed to through traffic on November 29<sup>th</sup> for 2-days.  
See [greatwateralliance.com](http://greatwateralliance.com) for detour information.  
2-way vehicular traffic will be maintained with lane restrictions and flagging.  
All local access will be maintained



## City of New Berlin

**NEW** **Where:** S. Racine Avenue from Swartz Road to Lawnsdale Road

**When:** October 11, 2021

**Duration:** 1-week

**General Description:** Return Flow Pipeline – Open Cut Restoration

**Notes:** 2-way vehicular traffic will be maintained with lane restrictions and flagging.  
All local access will be maintained



**Where:** WisDOT I-43 from Racine Court to Martin Road

**When:** TBD

**Duration:** TBD

**General Description:** Return Flow Pipeline – Open Cut & Trenchless Crossings

**Notes:** All local access will be maintained I-43.



**Where:** WisDOT I-43 at Muskego Creek

**When:** TBD

**Duration:** TBD

**General Description:** Return Flow Pipeline – Trenchless Crossings

**Notes:** All local access will be maintained on I-43.



**Where:** Moorland Road from Westridge Drive to Woods Road

**When:** August 9, 2021

**Duration:** 11-weeks

**General Description:** Return Flow Pipeline – Open Cut

**Notes:** 2-way traffic will be maintained with lane restrictions and flagging.  
West Woods Edge Road at Moorland Road will be closed on October 7<sup>th</sup> for 14-days.  
All local access will be maintained.



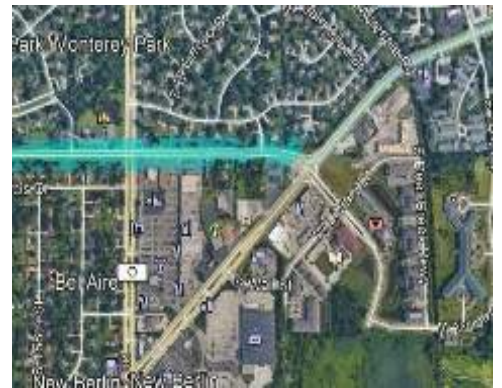
**Where:** Coffee Road from Moorland Road to National Avenue

**When:** July 27, 2021

**Duration:** 16-weeks

**General Description:** Water Supply Pipeline – Restoration

**Notes:** 2-way traffic will be maintained with lane restrictions and flagging.  
All local access will be maintained.



**UPDATE** **Where:** National Avenue from Coffee Road to 124<sup>th</sup> Avenue

**When:** June 7, 2021

**Duration:** 28-weeks

**General Description:** Water Supply Pipeline – Open Cut

**Notes:** 2-way traffic will be maintained with lane restrictions and flagging.  
All local access will be maintained.



## City of New Berlin, City of West Allis

<b>UPDATE Where:</b>	W. Oklahoma Avenue from 124 <sup>th</sup> Street to 108 <sup>th</sup> Street
<b>When:</b>	August 2, 2021
<b>Duration:</b>	21-weeks
<b>General Description:</b>	Water Supply Pipeline – Open Cut
<b>Notes:</b>	2-way traffic will be maintained with lane restrictions and flagging. All local access will be maintained.



## City of Muskego

<b>Where:</b>	Moorland Road from College Avenue to Janesville Road
<b>When:</b>	October 25, 2021
<b>Duration:</b>	4-weeks
<b>General Description:</b>	Return Flow Pipeline – Open Cut
<b>Notes:</b>	2-way traffic will be maintained with lane restrictions and flagging. All local access will be maintained.



<b>Where:</b>	Moorland Road from Janesville Road to Woods Road
<b>When:</b>	November 22, 2021
<b>Duration:</b>	3-weeks
<b>General Description:</b>	Return Flow Pipeline – Open Cut
<b>Notes:</b>	2-way traffic will be maintained with lane restrictions and flagging. All local access will be maintained.



**UPDATE Where:** Durham Drive from Woods Road to N. Cape Road

**When:** June 21, 2021

**Duration:** 23-weeks

**General Description:** Return Flow Pipeline – Open Cut

**Notes:** 2-way traffic will be maintained with lane restrictions and flagging.  
All local access will be maintained.



**Where:** N. Cape Road from Durham Road to Ryan Road

**When:** September 13, 2021

**Duration:** 8-weeks

**General Description:** Return Flow Pipeline – Open Cut

**Notes:** N. Cape Road from Durham Road to Ryan Road will be closed to through traffic on September 13<sup>th</sup> for 8-weeks  
See [greatwateralliance.com](http://greatwateralliance.com) for detour information.  
All local access will be maintained.



**City of Franklin, Milwaukee County**

**Where:** Ryan Road at Loomis Road/STH 36

**When:** August 9, 2021

**Duration:** 12-weeks

**General Description:** Return Flow Pipeline – Trenchless Crossing

**Notes:** 2-way traffic will be maintained with lane restrictions and flagging.  
All local access will be maintained.



**Where:** Ryan Road (STH 100) at Root River (west of 60<sup>th</sup> Street)

**When:** July 19, 2021

**Duration:** 17-weeks

**General Description:** Return Flow Pipeline – Trenchless Crossing

**Notes:** 2-way traffic will be maintained with lane restrictions and flagging.

HWY 100 eastbound lane west of 60<sup>th</sup> street lane closure.

All local access will be maintained.



**Where:** Ryan Road from 92<sup>nd</sup> Street to St. Martins Road

**When:** October 11, 2021

**Duration:** 3-weeks

**General Description:** Return Flow Pipeline – Trenchless Crossing

**Notes:** 2-way traffic will be maintained with lane restrictions and flagging.

All local access will be maintained.



**UPDATE** **Where:** Ryan Road (STH 100) from 68<sup>th</sup> Street to 60<sup>th</sup> Street

**When:** October 18, 2021

**Duration:** 2-weeks

**General Description:** Return Flow Pipeline – Trenchless Crossing

**Notes:** 2-way traffic will be maintained with lane restrictions and flagging.

All local access will be maintained.





**Where:** 60<sup>th</sup> Street from Ryan Road (STH 100) to Oakwood Road

**When:** August 16, 2021

**Duration:** 13-week

**General Description:** Return Flow Pipeline – Open Cut

**Notes:** South 60<sup>th</sup> Street at Ryan Road will be closed to through traffic on September 28<sup>th</sup> for 15-days

South 60<sup>th</sup> Street from Ryan Road to Airways Drive will be closed to northbound traffic on October 4<sup>th</sup> for 40-days.

South 60<sup>th</sup> Street from Franklin Drive to Oakwood Road will be closed to northbound traffic on October 21<sup>st</sup> for 16-days

See [greatwateralliance.com](http://greatwateralliance.com) for detour information.

All local access will be maintained.



**Where:** Oakwood Road

**When:** May 17, 2021

**Duration:** 28-months

**General Description:** Return Flow Pipeline – Outfall Building



This historic project will bring much needed water to Waukesha, and the Great Water Alliance is committed to completing the work in the most efficient and least disruptive ways possible. Thank you for your patience and cooperation during this construction.



*Using Great Lakes Water the Right Way*

[www.greatwateralliance.com](http://www.greatwateralliance.com)