





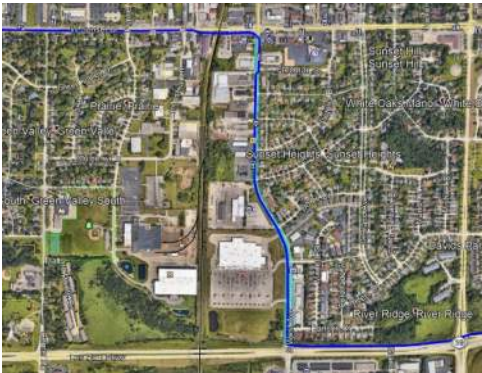
# Great Lakes Water Supply Program CONSTRUCTION NOTIFICATION

Friday, September 10, 2021

Locations noted below as **NEW** indicates new entries in this Construction Notification  
Locations noted below as **UPDATE** indicates updated information has been provided in this Construction Notification

## Community Construction Impact

### City of Waukesha

<b>UPDATE</b>	<b>Where:</b>	Sentry Drive at Clean Water Plant	
	<b>When:</b>	April 28, 2021	
	<b>Duration:</b>	23-weeks	
	<b>General Description:</b>	Return Flow Pipeline – Trenchless Crossings	
	<b>Where:</b>	Sunset Drive at Poelple’s Bank Parking	
	<b>When:</b>	August 9, 2021	
	<b>Duration:</b>	5-weeks	
	<b>General Description:</b>	Return Flow Pipeline – Open Cut restoration	
	<b>Notes:</b>	All local access will be maintained	
<b>UPDATE</b>	<b>Where:</b>	S. West Avenue from Sunset Drive to Les Paul Parkway	
	<b>When:</b>	May 17, 2021	
	<b>Duration:</b>	18-weeks	
	<b>General Description:</b>	Return Flow Pipeline – Open Cut	
	<b>Notes:</b>	2-way vehicular traffic will be maintained with lane restrictions and flagging. S. West Avenue at Sunset Drive will be closed to through traffic on September 8 <sup>th</sup> for 8-days. See <a href="http://greatwateralliance.com">greatwateralliance.com</a> for detour information. All local access will be maintained.	

**City of Waukesha, Village of Waukesha**

**Where:** Sunset Drive from Sentry Drive to S. West Avenue

**When:** March 10, 2021

**Duration:** 28-weeks

**General Description:** Return Flow Pipeline – Open Cut Restoration

**Notes:** 2-way vehicular traffic will be maintained with lane restrictions and flagging.  
All local access will be maintained.



**UPDATE** **Where:** Les Paul Parkway at S. East Avenue

**When:** October 4, 2021

**Duration:** 3-weeks

**General Description:** Return Flow Pipeline – Trenchless Crossings

**Notes:** 2-way vehicular traffic will be maintained with lane restrictions and flagging.  
All local access will be maintained.



**Where:** Les Paul Parkway from S. West Avenue to 1,750' S. Sunset Drive

**When:** TBD

**Duration:** TBD

**General Description:** Return Flow Pipeline – Open Cut



**Where:** E. Sunset Drive from Les Paul Parkway to S. Racine Avenue

**When:** June 28, 2021

**Duration:** 12-weeks

**General Description:** Return Flow Pipeline – Open Cut Restoration

**Notes:** 2-way vehicular traffic will be maintained with lane restrictions and flagging.  
All local access will be maintained



**Where:** S. Racine Avenue from E. Sunset Drive to S. Swartz Road

**When:** August 11, 2021

**Duration:** 15-weeks

**General Description:** Return Flow Pipeline – Open Cut

**Notes:** S. Racine Avenue from Les Paul Parkway to Lawnsdale Road will be closed on October 15<sup>th</sup> for 4-days.

Woodland Drive at S. Racine Avenue will be closed to through traffic on October 26<sup>th</sup> for 2-days.

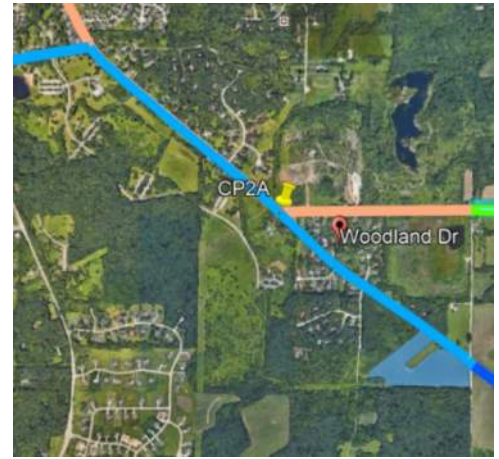
S. Racine Avenue from Les Paul Parkway to Lawnsdale Road will be closed on October 29<sup>th</sup> for 3-days.

S. Swartz Drive at S. Racine Avenue to be closed to through traffic on November 22<sup>nd</sup> for 2-days.

See [greatwateralliance.com](http://greatwateralliance.com) for detour information.

2-way vehicular traffic will be maintained with lane restrictions and flagging.

All local access will be maintained



**City of New Berlin**

**Where:** WisDOT I-43 from Racine Court to Martin Road

**When:** TBD

**Duration:** TBD

**General Description:** Return Flow Pipeline – Open Cut & Trenchless Crossings

**Notes:** All local access will be maintained I-43.



**Where:** WisDOT I-43 at Muskego Creek

**When:** TBD

**Duration:** TBD

**General Description:** Return Flow Pipeline – Trenchless Crossings

**Notes:** All local access will be maintained on I-43.



**Where:** Small Road from West of S. Westridge Road to S. Westridge Road  
S Westridge Road from Small Road to Moorland Road

**When:** March 8, 2021

**Duration:** 23-weeks

**General Description:** Return Flow Pipeline – Open Cut Restoration

**Notes:** 2-way traffic will be maintained with lane restrictions and flagging.  
All local access will be maintained.



**Where:** Moorland Road from Westridge Drive to Woods Road

**When:** August 9, 2021

**Duration:** 8-weeks

**General Description:** Return Flow Pipeline – Open Cut

**Notes:** 2-way traffic will be maintained with lane restrictions and flagging.  
West Wood Edge Road at Moorland Road will be closed on September 13<sup>th</sup> for 3 days.  
All local access will be maintained.



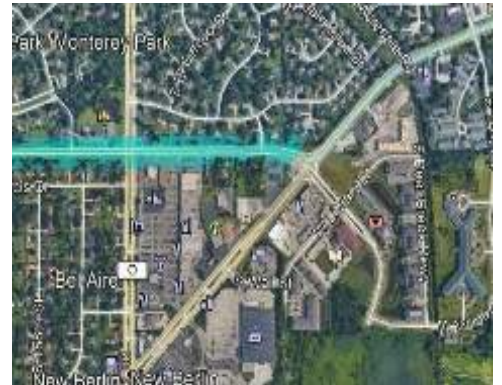
**Where:** Coffee Road from S. Swartz Road to Calhoun Road  
**When:** April 5, 2021  
**Duration:** 21-weeks  
**General Description:** Water Supply Pipeline – Open Cut Road Restoration  
**Notes:** 2-way traffic will be maintained with lane restrictions and flagging.  
All local access will be maintained.



**Where:** Coffee Road from Calhoun Road to Moorland Road  
**When:** March 8, 2021  
**Duration:** 26-weeks  
**General Description:** Water Supply Pipeline – Open Cut Road Restoration  
**Notes:** 2-way traffic will be maintained with lane restrictions and flagging.  
All local access will be maintained.



**Where:** Coffee Road from Moorland Road to National Avenue  
**When:** July 7, 2021  
**Duration:** 14-weeks  
**General Description:** Water Supply Pipeline – Restoration  
**Notes:** Westbound Coffee Road will be closed to through traffic on July 7<sup>th</sup> for 14-weeks.  
See [greatwateralliance.com](http://greatwateralliance.com) for detour information.  
All local access will be maintained.



**Where:** National Avenue from Coffee Road to 124<sup>th</sup> Avenue  
**When:** June 7, 2021  
**Duration:** 14-weeks  
**General Description:** Water Supply Pipeline – Open Cut  
**Notes:** 2-way traffic will be maintained with lane restrictions and flagging.  
All local access will be maintained.



**City of New Berlin, City of West Allis**

**Where:** W. Oklahoma Avenue from 124<sup>th</sup> Street to 108<sup>th</sup> Street

**When:** July 29, 2021

**Duration:** 14-weeks

**General Description:** Water Supply Pipeline – Open Cut

**Notes:** 2-way traffic will be maintained with lane restrictions and flagging.  
All local access will be maintained.



**City of Muskego**

**Where:** Durham Road from Woods Road to N. Cape Road

**When:** June 21, 2021

**Duration:** 15-weeks

**General Description:** Return Flow Pipeline – Open Cut

**Notes:** 2-way traffic will be maintained with lane restrictions and flagging.  
All local access will be maintained.



**NEW** **Where:** N. Cape Road from Durham Road to Ryan Road

**When:** September 9, 2021

**Duration:** 8-weeks

**General Description:** Return Flow Pipeline – Open Cut

**Notes:** N. Cape Road from Durham Road to Ryan Road will be closed to through traffic on September 13<sup>th</sup> for 50-days  
See [greatwateralliance.com](http://greatwateralliance.com) for detour information.  
All local access will be maintained.



**City of Franklin, Milwaukee County**

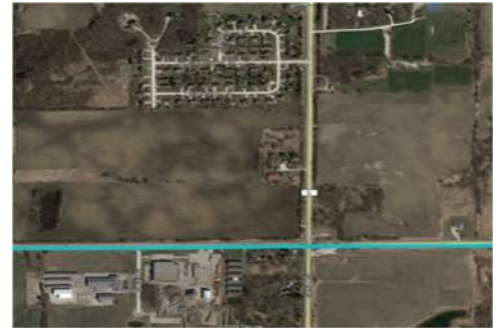
**Where:** Ryan Road at Loomis Road/STH 36  
**When:** August 9, 2021  
**Duration:** 12-weeks  
**General Description:** Return Flow Pipeline – Trenchless Crossing  
2-way traffic will be maintained with lane restrictions and flagging.  
All local access will be maintained.



**UPDATE Where:** Ryan Road (STH 100) at Root River (west of 60<sup>th</sup> Street)  
**When:** July 19, 2021  
**Duration:** 13-weeks  
**General Description:** Return Flow Pipeline – Trenchless Crossing  
**Notes:** 2-way traffic will be maintained with lane restrictions and flagging.  
HWY 100 eastbound lane west of 60<sup>th</sup> street lane closure.  
All local access will be maintained.



**UPDATE Where:** Ryan Road (STH 100) at 76<sup>th</sup> Street (CTH U)  
**When:** August 30, 2021  
**Duration:** 6-weeks  
**General Description:** Return Flow Pipeline – Trenchless Crossing  
**Notes:** 2-way traffic will be maintained with lane restrictions and flagging.  
All local access will be maintained.



**UPDATE Where:** 60<sup>th</sup> Street from Ryan Road (STH 100) to Oakwood Drive

**When:** August 16, 2021

**Duration:** 9-week

**General Description:** Return Flow Pipeline – Open Cut

**Notes:** South 60<sup>th</sup> Street at Ryan Road will be closed to through traffic on September 20<sup>th</sup> 6-days.

South 60<sup>th</sup> Street from Ryan Road to Airways Drive will be closed to northbound traffic on September 20<sup>th</sup> for 30-days

South 60<sup>th</sup> Street from Airways Drive to Oakwood Drive will be closed to northbound traffic on October 18<sup>th</sup> for 23-days

See [greatwateralliance.com](http://greatwateralliance.com) for detour information.

All local access will be maintained.



**UPDATE Where:** Oakwood Road from 60<sup>th</sup> Street to 1,200 east of 60<sup>th</sup> Street

**When:** September 10, 2021

**Duration:** 1-week

**General Description:** Return Flow Pipeline – Open Cut

**Notes:** 2-way traffic will be maintained with lane restrictions and flagging.

All local access will be maintained.

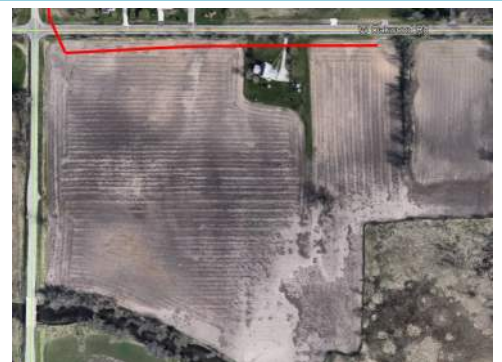


**Where:** Oakwood Road

**When:** May 17, 2021

**Duration:** 24-weeks

**General Description:** Return Flow Pipeline – Outfall Building



This historic project will bring much needed water to Waukesha, and the Great Water Alliance is committed to completing the work in the most efficient and least disruptive ways possible. Thank you for your patience and cooperation during this construction.

