



# Great Lakes Water Supply Program CONSTRUCTION NOTIFICATION

Friday, August 27, 2021

Locations noted below as **NEW** indicates new entries in this Construction Notification  
Locations noted below as **UPDATE** indicates updated information has been provided in this Construction Notification

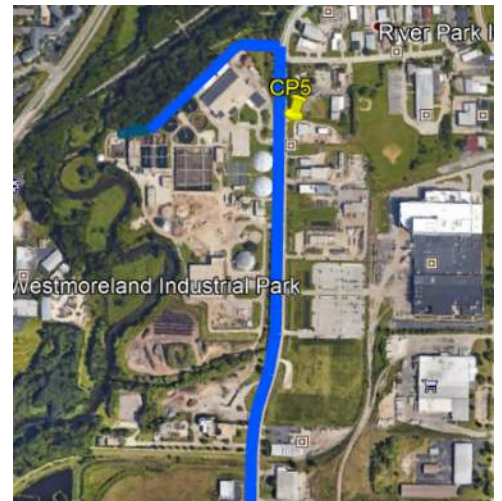
## Community Construction Impact

### City of Waukesha

**UPDATE** **Where:** Sentry Drive at Clean Water Plant  
**When:** April 28, 2021  
**Duration:** 20-weeks  
**General Description:** Return Flow Pipeline – Trenchless Crossings



**UPDATE** **Where:** Sentry Drive from Philip Drive to W. Sunset Drive  
**When:** August 26, 2021  
**Duration:** 2-weeks  
**General Description:** Return Flow Pipeline – Open Cut  
**Notes:** 2-way vehicular traffic will be maintained with lane restrictions and flagging. All local access will be maintained.



**Where:** Sunset Drive at Sunset Bank Parking  
**When:** August 9, 2021  
**Duration:** 3-weeks  
**General Description:** Return Flow Pipeline – Open Cut  
**Notes:** All local access will be maintained



**UPDATE Where:** S. West Avenue from Sunset Drive to Les Paul Parkway

**When:** May 17, 2021

**Duration:** 18-weeks

**General Description:** Return Flow Pipeline – Open Cut

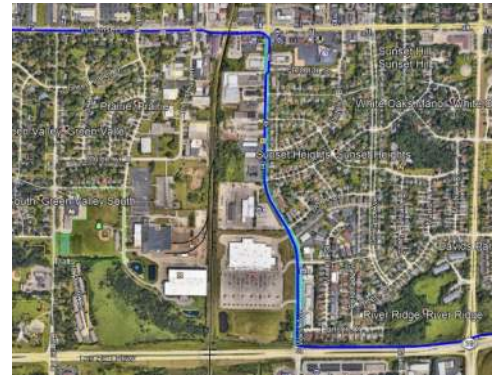
**Notes:** 2-way vehicular traffic will be maintained with lane restrictions and flagging.

S. West Avenue at Les Paul Parkway will be closed to through traffic on August 2<sup>nd</sup> for 30-days.

S. West Avenue at Sunset Drive will be closed to through traffic on **September 8<sup>th</sup>** for 8-days.

See [greatwateralliance.com](http://greatwateralliance.com) for detour information.

All local access will be maintained.



**City of Waukesha, Village of Waukesha**

**UPDATE Where:** Sunset Drive from Sentry Drive to S. West Avenue

**When:** March 10, 2021

**Duration:** 28-weeks

**General Description:** Return Flow Pipeline – Open Cut Restoration

**Notes:** 2-way vehicular traffic will be maintained with lane restrictions and flagging.

All local access will be maintained.



**UPDATE Where:** Les Paul Parkway at S. East Avenue

**When:** September 13, 2021

**Duration:** 3-weeks

**General Description:** Return Flow Pipeline – Trenchless Crossings

**Notes:** 2-way vehicular traffic will be maintained with lane restrictions and flagging.

All local access will be maintained.



**UPDATE Where:** Les Paul Parkway from S. West Avenue to 1,750' S. Sunset Drive

**When:** TBD

**Duration:** TBD

**General Description:** Return Flow Pipeline – Open Cut



**UPDATE Where:** E. Sunset Drive from Les Paul Parkway to S. Racine Avenue

**When:** June 28, 2021

**Duration:** 7-weeks

**General Description:** Return Flow Pipeline – Open Cut

**Notes:** 2-way vehicular traffic will be maintained with lane restrictions and flagging.  
All local access will be maintained



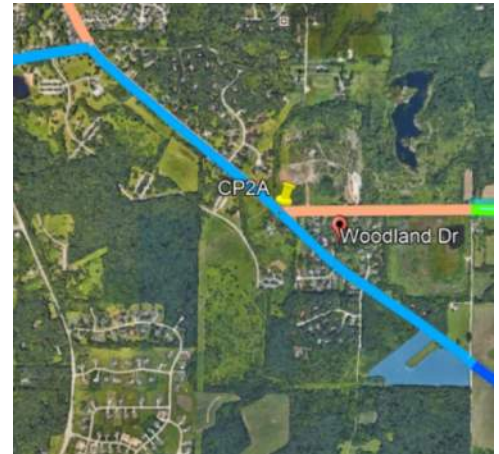
**UPDATE Where:** S. Racine Avenue from E. Sunset Drive to S. Swartz Road

**When:** August 11, 2021

**Duration:** 15-weeks

**General Description:** Return Flow Pipeline – Open Cut

**Notes:** S. Racine Avenue from Les Paul Parkway to Lawnsdale Road will be closed on October 15<sup>th</sup> for 4-days.  
Woodland Drive at S. Racine Avenue will be closed to through traffic on October 26<sup>th</sup> for 2-days.  
S. Racine Avenue from Les Paul Parkway to Lawnsdale Road will be closed on October 29<sup>st</sup> for 3-days.  
S. Swartz Drive at S. Racine Avenue to be closed to through traffic on November 22<sup>nd</sup> for 2-days.  
See [greatwateralliance.com](http://greatwateralliance.com) for detour information.  
2-way vehicular traffic will be maintained with lane restrictions and flagging.  
All local access will be maintained



### City of New Berlin

**UPDATE Where:** WisDOT I-43 from Racine Court to Martin Road

**When:** TBD

**Duration:** TBD

**General Description:** Return Flow Pipeline – Open Cut & Trenchless Crossings

**Notes:** All local access will be maintained I-43.





**Where:** WisDOT I-43 at Muskego Creek  
**When:** TBD  
**Duration:** TBD  
**General Description:** Return Flow Pipeline – Trenchless Crossings  
**Notes:** All local access will be maintained on I-43.





**Where:** Small Road from West of S. Westridge Road to S. Westridge Road  
S Westridge Road from Small Road to Moorland Road  
**When:** March 8, 2021  
**Duration:** 23-weeks  
**General Description:** Return Flow Pipeline – Open Cut Construction  
**Notes:** S. Westridge Road closed at Moorland Road on May 18<sup>th</sup> for 12-weeks.  
See [greatwateralliance.com](http://greatwateralliance.com) for detour information.  
2-way traffic will be maintained with lane restrictions and flagging.  
All local access will be maintained.





**UPDATE** **Where:** Moorland Road from Westridge Drive to Woods Road  
**When:** August 9, 2021  
**Duration:** 8-weeks  
**General Description:** Return Flow Pipeline – Open Cut  
**Notes:** 2-way traffic will be maintained with lane restrictions and flagging.  
West Wood Edge Road at Moorland Road will be closed on September 13<sup>th</sup> for 3 days.  
All local access will be maintained.



<b>UPDATE Where:</b>	Coffee Road from S. Swartz Road to Calhoun Road	
<b>When:</b>	April 5, 2021	
<b>Duration:</b>	21-weeks	
<b>General Description:</b>	Water Supply Pipeline – Open Cut Road Restoration	
<b>Notes:</b>	2-way traffic will be maintained with lane restrictions and flagging. All local access will be maintained.	

<b>UPDATE Where:</b>	Coffee Road from Calhoun Road to Moorland Road	
<b>When:</b>	March 8, 2021	
<b>Duration:</b>	26-weeks	
<b>General Description:</b>	Water Supply Pipeline – Open Cut Road Restoration	
<b>Notes:</b>	2-way traffic will be maintained with lane restrictions and flagging. All local access will be maintained.	

<b>UPDATE Where:</b>	Coffee Road from Moorland Road to National Avenue	
<b>When:</b>	July 7, 2021	
<b>Duration:</b>	14-weeks	
<b>General Description:</b>	Water Supply Pipeline – Open Cut & Trenchless Crossing	
<b>Notes:</b>	Westbound Coffee Road will be closed to through traffic on July 7 <sup>th</sup> for 14-weeks. See <a href="http://greatwateralliance.com">greatwateralliance.com</a> for detour information. All local access will be maintained.	

<b>Where:</b>	National Avenue from Coffee Road to 124 <sup>th</sup> Avenue	
<b>When:</b>	June 7, 2021	
<b>Duration:</b>	14-weeks	
<b>General Description:</b>	Water Supply Pipeline – Open Cut	
<b>Notes:</b>	2-way traffic will be maintained with lane restrictions and flagging. All local access will be maintained.	



## City of New Berlin, City of West Allis

<b>UPDATE Where:</b>	W. Oklahoma Avenue from 124 <sup>th</sup> Street to 108 <sup>th</sup> Street
<b>When:</b>	July 29, 2021
<b>Duration:</b>	14-weeks
<b>General Description:</b>	Water Supply Pipeline – Open Cut
<b>Notes:</b>	2-way traffic will be maintained with lane restrictions and flagging. All local access will be maintained.



## City of Muskego

<b>UPDATE Where:</b>	Durham Road from Woods Road to N. Cape Road
<b>When:</b>	June 21, 2021
<b>Duration:</b>	15-weeks
<b>General Description:</b>	Return Flow Pipeline – Open Cut
<b>Notes:</b>	Durham Drive from Janesville Road to N. Cape Road will be closed to through traffic on August 10 <sup>th</sup> for 28-days See <a href="http://greatwateralliance.com">greatwateralliance.com</a> for detour information. All local access will be maintained.



## City of Franklin, Milwaukee County

<b>UPDATE Where:</b>	Ryan Road at Loomis Road/STH 36
<b>When:</b>	August 9, 2021
<b>Duration:</b>	12-weeks
<b>General Description:</b>	Return Flow Pipeline – Trenchless Crossing 2-way traffic will be maintained with lane restrictions and flagging. All local access will be maintained.



<b>UPDATE Where:</b>	Ryan Road (STH 100) at Root River (west of 60 <sup>th</sup> Street)
<b>When:</b>	July 19, 2021
<b>Duration:</b>	8-weeks
<b>General Description:</b>	Return Flow Pipeline – Trenchless Crossing
<b>Notes:</b>	2-way traffic will be maintained with lane restrictions and flagging. All local access will be maintained.



<b>UPDATE Where:</b>	Ryan Road (STH 100) at 76 <sup>th</sup> Street (CTH U)
<b>When:</b>	September 13, 2021

**Duration:** 4-weeks  
**General Description:** Return Flow Pipeline – Trenchless Crossing  
**Notes:** 2-way traffic will be maintained with lane restrictions and flagging.  
All local access will be maintained.



**Where:** 60<sup>th</sup> Street from Ryan Road (STH 100) to Oakwood Drive  
**When:** August 16, 2021  
**Duration:** 9-week  
**General Description:** Return Flow Pipeline – Open Cut  
**Notes:** 2-way traffic will be maintained with lane restrictions and flagging.  
60<sup>th</sup> Street closed at Ryan Road on September 13<sup>th</sup> for 5-days.  
Oakwood Drive at 60<sup>th</sup> Street will be closed to through traffic on October 13<sup>th</sup> for 2-days  
See [greatwateralliance.com](http://greatwateralliance.com) for detour information.  
All local access will be maintained.



**Where:** Oakwood Road from 60<sup>th</sup> Street to 1,200 east of 60<sup>th</sup> Street  
**When:** September 16, 2021  
**Duration:** 1-week  
**General Description:** Return Flow Pipeline – Open Cut  
**Notes:** 2-way traffic will be maintained with lane restrictions and flagging.  
All local access will be maintained.



**Where:** Oakwood Road  
**When:** May 17, 2021  
**Duration:** 24-weeks  
**General Description:** Return Flow Pipeline – Outfall Building



This historic project will bring much needed water to Waukesha, and the Great Water Alliance is committed to completing the work in the most efficient and least disruptive ways possible. Thank you for your patience and cooperation during this construction.



*Using Great Lakes Water the Right Way*

[www.greatwateralliance.com](http://www.greatwateralliance.com)