



Great Lakes Water Supply Program CONSTRUCTION NOTIFICATION

Friday, July 30, 2021

Locations noted below as **NEW** indicates new entries in this Construction Notification
Locations noted below as **UPDATE** indicates updated information has been provided in this Construction Notification

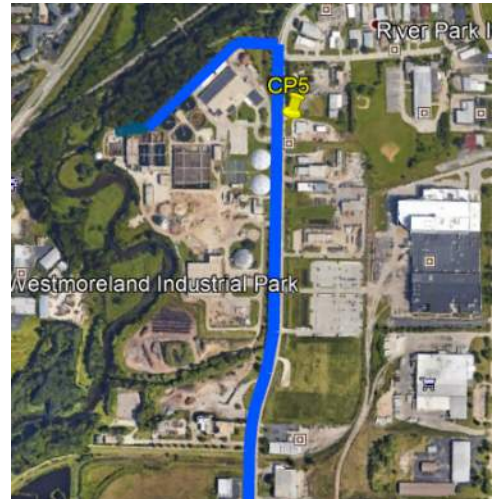
Community Construction Impact

City of Waukesha

UPDATE **Where:** Sentry Drive at Clean Water Plant
When: April 28, 2021
Duration: 15-weeks
General Description: Return Flow Pipeline – Trenchless Crossings



UPDATE **Where:** Sentry Drive from Philip Drive to W. Sunset Drive
When: July 19, 2021
Duration: 2-weeks
General Description: Return Flow Pipeline – Open Cut
Notes: 2-way vehicular traffic will be maintained with lane restrictions and flagging.
All local access will be maintained.



Where: Sunset Drive at Canadian National Railroad
When: June 8, 2021
Duration: 7-weeks
General Description: Return Flow Pipeline – Trenchless Crossings
Notes: 2-way vehicular traffic will be maintained with lane restrictions and flagging.
All local access will be maintained



UPDATE **Where:** Sunset Drive at Sunset Bank Parking

When: August 2, 2021

Duration: 2-weeks

General Description: Return Flow Pipeline – Open Cut

Notes: All local access will be maintained



UPDATE **Where:** S. West Avenue from Sunset Drive to Les Paul Parkway

When: May 17, 2021

Duration: 10-weeks

General Description: Return Flow Pipeline – Open Cut

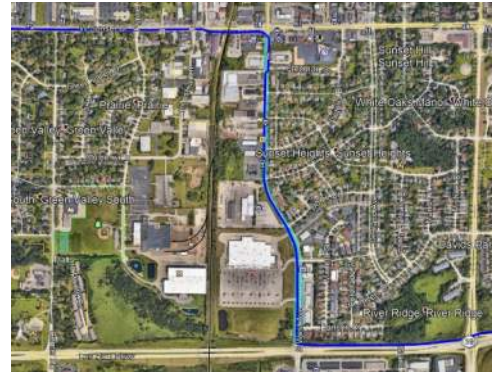
Notes: 2-way vehicular traffic will be maintained with lane restrictions and flagging.

S. West Avenue at Sunset Drive will be closed to through traffic on August 9th for 8-days.

S. West Avenue at Les Paul Parkway will be closed to through traffic on July 19th for 18-days.

See greatwateralliance.com for detour information.

All local access will be maintained.



City of Waukesha, Village of Waukesha

UPDATE **Where:** Sunset Drive from Sentry Drive to S. West Avenue

When: March 10, 2021

Duration: 24-weeks

General Description: Return Flow Pipeline – Open Cut Restoration



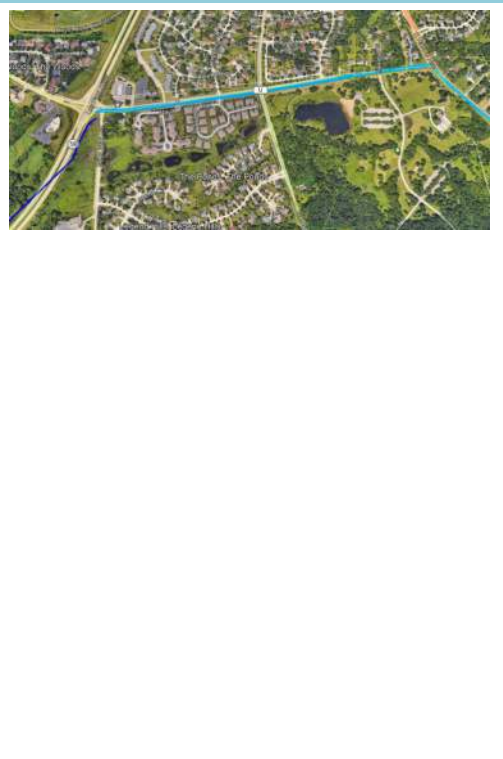
Notes: 2-way vehicular traffic will be maintained with lane restrictions and flagging.

S. Prairie Avenue south of Sunset Drive will be closed to through traffic on August 2nd for 7-days.

Industrial Lane south of Sunset Drive will be closed to through traffic on August 9th for 7-days.

All local access will be maintained.



<p>Where:</p> <p>When:</p> <p>Duration:</p> <p>General Description:</p> <p>Notes:</p>	<p>Les Paul Parkway at S. East Avenue</p> <p>August 2, 2021</p> <p>3-weeks</p> <p>Return Flow Pipeline – Trenchless Crossings</p> <p>2-way vehicular traffic will be maintained with lane restrictions and flagging. All local access will be maintained.</p>	
<p>UPDATE Where:</p> <p>When:</p> <p>Duration:</p> <p>General Description:</p>	<p>Les Paul Parkway from S. West Avenue to 1,750' S. Sunset Drive</p> <p>TBD</p> <p>TBD</p> <p>Return Flow Pipeline – Open Cut</p>	
<p>UPDATE Where:</p> <p>When:</p> <p>Duration:</p> <p>General Description:</p> <p>Notes:</p>	<p>E. Sunset Drive from Les Paul Parkway to S. Racine Avenue</p> <p>June 28, 2021</p> <p>5-weeks</p> <p>Return Flow Pipeline – Open Cut</p> <p>Guthrie Road at E. Sunset Drive will be closed to through traffic on August 16th for 2-days.</p> <p>E. Sunset Drive will be closed to through traffic on August 2nd for 2-days.</p> <p>E. Sunset Drive from Les Paul Parkway to Racine Avenue will be closed to through traffic on July 29th for 12-days.</p> <p>See greatwateralliance.com for detour information.</p> <p>2-way vehicular traffic will be maintained with lane restrictions and flagging. All local access will be maintained</p>	

UPDATE Where: S. Racine Avenue from E. Sunset Drive to S. Swartz Road

When: August 11, 2021

Duration: 15-weeks

General Description: Return Flow Pipeline – Open Cut

Notes: S. Racine Avenue from Les Paul Parkway to Lawnsdale Road will be closed on August 27th for 3-days.

Woodland Drive at S. Racine Avenue will be closed to through traffic on August 8th for 2-days.

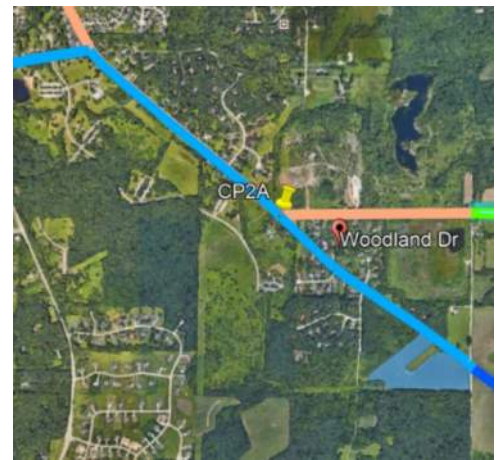
S. Racine Avenue from Les Paul Parkway to Lawnsdale Road will be closed on September 17th for 3-days.

S. Swartz Drive at S. Racine Avenue to be closed to through traffic on September 27th for 2-days.

See greatwateralliance.com for detour information.

2-way vehicular traffic will be maintained with lane restrictions and flagging.

All local access will be maintained



City of New Berlin

UPDATE Where: WisDOT I-43 from Racine Court to Martin Road

When: TBD

Duration: TBD

General Description: Return Flow Pipeline – Open Cut & Trenchless Crossings

Notes: All local access will be maintained I-43.



Where: WisDOT I-43 at Muskego Creek

When: TBD

Duration: TBD

General Description: Return Flow Pipeline – Trenchless Crossings

Notes: All local access will be maintained on I-43.



Where: Small Road from West of S. Westridge Road to S. Westridge Road

S Westridge Road from Small Road to Moorland Road

When: March 8, 2021

Duration: 16-weeks

General Description: Return Flow Pipeline – Open Cut Construction

Notes: S. Westridge Road closed at Moorland Road on May 18th for 12-weeks.

See greatwateralliance.com for detour information.

2-way traffic will be maintained with lane restrictions and flagging.

All local access will be maintained.



UPDATE Where: Moorland Road from Westridge Drive to Woods Road

When: May 17, 2021

Duration: 16-weeks

General Description: Return Flow Pipeline – Open Cut

Notes: 2-way traffic will be maintained with lane restrictions and flagging.

West Wood Edge Road at Moorland Road will be closed on August 11th for 3 days.

All local access will be maintained.



UPDATE Where: Coffee Road from S. Swartz Road to Calhoun Road

When: April 5, 2021

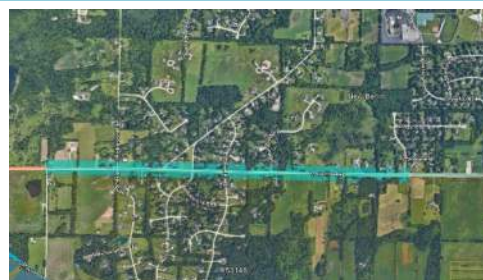
Duration: 21-weeks

General Description: Water Supply Pipeline – Open Cut

Notes: Coffee Road from Racine Avenue to Calhoun Road will be closed to through traffic on May 5th for 19-weeks.

See greatwateralliance.com for detour information.

All local access will be maintained.



UPDATE Where: Coffee Road from Calhoun Road to Moorland Road

When: March 8, 2021

Duration: 26-weeks

General Description: Water Supply Pipeline – Open Cut & Trenchless Crossing
Coffee Road at Calhoun Road right turn lane closure on March 8 for 26-weeks.

Notes: 2-way traffic will be maintained with lane restrictions and flagging.
All local access will be maintained.



UPDATE Where: Coffee Road from Moorland Road to National Avenue

When: July 7, 2021

Duration: 14-weeks

General Description: Water Supply Pipeline – Open Cut & Trenchless Crossing

Notes: Westbound Coffee Road will be closed to through traffic on July 7th for 14-weeks.
See greatwateralliance.com for detour information.
All local access will be maintained.



Where: National Avenue from Coffee Road to 124th Avenue

When: June 7, 2021

Duration: 14-weeks

General Description: Water Supply Pipeline – Open Cut

Notes: 2-way traffic will be maintained with lane restrictions and flagging.
All local access will be maintained.



City of New Berlin, City of West Allis

UPDATE Where:	W. Oklahoma Avenue from 124 th Street to 108 th Street
When:	July 29, 2021
Duration:	14-weeks
General Description:	Water Supply Pipeline – Open Cut
Notes:	W. Oklahoma Avenue at National Avenue will be closed on August 2 nd for 12-weeks. 2-way traffic will be maintained with lane restrictions and flagging. All local access will be maintained.



City of Muskego

UPDATE Where:	Durham Road from Woods Road to N. Cape Road
When:	June 21, 2021
Duration:	14-weeks
General Description:	Return Flow Pipeline – Open Cut
Notes:	Bella Chasse Parkway closed to through traffic at Durham Road on August 2 nd for 2-days Durham Drive from Janesville Road to N. Cape Road will be closed to through traffic on August 18 th for 3-days Priegel Drive closed to through traffic at Durham Drive on September 21 st for 3-days Durham Drive from Janesville Road to N. Cape Road will be closed to through traffic on October 28 th for 5-days See greatwateralliance.com for detour information. 2-way traffic will be maintained with lane restrictions and flagging. All local access will be maintained.



City of Franklin, Milwaukee County

UPDATE Where:	Ryan Road at Loomis Road/STH 36
When:	May 24, 2021
Duration:	4-weeks
General Description:	Return Flow Pipeline – Trenchless Crossing



NEW Where: Ryan Road (STH 100) at Root River (west of 60th Street)

When: July 19, 2021

Duration: 6-weeks

General Description: Return Flow Pipeline – Trenchless Crossing

Notes: 2-way traffic will be maintained with lane restrictions and flagging.

HWY 100 Eastbound lane West of 60th street lane Closure

All local access will be maintained.



NEW Where: 60th Street from Ryan Road (STH 100) to Oakwood Drive

When: August 8, 2021

Duration: 9-week

General Description: Return Flow Pipeline – Open Cut from Root River to 60th Street to Oakwood Drive
Ryan Road eastbound shoulder closure west of 60th Street on August 9th 5-days
60th Street closed at Ryan Road on August 16th for 5-days.

Oakwood Drive at 60th Street will be closed to through traffic on September 30th for 2-days

See greatwateralliance.com for detour information.

All local access will be maintained.



NEW Where: Oakwood Road from 60th Street to 1,200 east of 60th Street

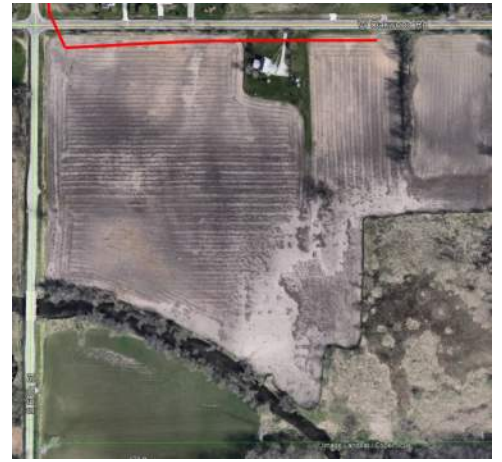
When: October 4, 2021

Duration: 1-week

General Description: Return Flow Pipeline – Open Cut Investigation and Survey



Where: Oakwood Road
When: May 17, 2021
Duration: 15-weeks
General Description: Return Flow Pipeline – Outfall Building



This historic project will bring much needed water to Waukesha, and the Great Water Alliance is committed to completing the work in the most efficient and least disruptive ways possible. Thank you for your patience and cooperation during this construction.



Using Great Lakes Water the Right Way

www.greatwateralliance.com