



Great Lakes Water Supply Program CONSTRUCTION NOTIFICATION

Friday, July 16, 2021

Locations noted below as **NEW** indicates new entries in this Construction Notification
Locations noted below as **UPDATE** indicates updated information has been provided in this Construction Notification

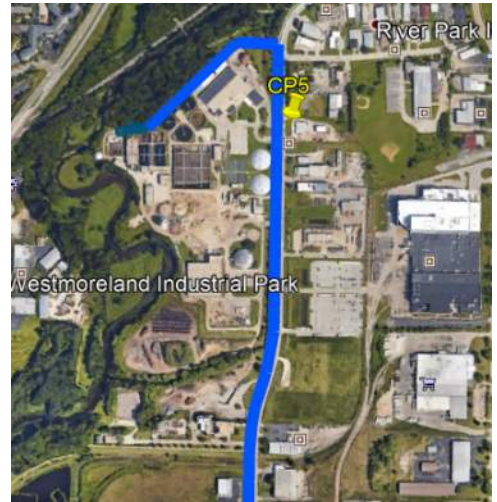
Community Construction Impact

City of Waukesha

UPDATE **Where:** Sentry Drive at Clean Water Plant
When: April 28, 2021
Duration: 15-weeks
General Description: Return Flow Pipeline – Trenchless Crossings



UPDATE **Where:** Sentry Drive from Philip Drive to W. Sunset Drive
When: July 19, 2021
Duration: 2-weeks
General Description: Return Flow Pipeline – Open Cut
Notes: 2-way vehicular traffic will be maintained with lane restrictions and flagging.
All local access will be maintained.



Where: Sunset Drive at Canadian National Railroad
When: June 8, 2021
Duration: 7-weeks
General Description: Return Flow Pipeline – Trenchless Crossings
Notes: 2-way vehicular traffic will be maintained with lane restrictions and flagging.
All local access will be maintained



UPDATE **Where:** Sunset Drive at Sunset Bank Parking

When: July 19, 2021

Duration: 2-weeks

General Description: Return Flow Pipeline – Open Cut

Notes: All local access will be maintained



UPDATE **Where:** S. West Avenue from Sunset Drive to Les Paul Parkway

When: May 17, 2021

Duration: 10-weeks

General Description: Return Flow Pipeline – Open Cut

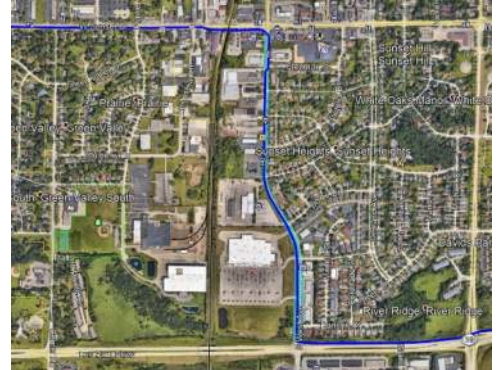
Notes: 2-way vehicular traffic will be maintained with lane restrictions and flagging.

S. West Avenue at Sunset Drive will be closed to through traffic on July 30th for 8-days.

S. West Avenue at Les Paul Parkway will be closed to through traffic on July 19th for 4-days

See greatwateralliance.com for detour information.

All local access will be maintained.



City of Waukesha, Village of Waukesha

UPDATE **Where:** Sunset Drive from Sentry Drive to S. West Avenue

When: March 10, 2021

Duration: 20-weeks

General Description: Return Flow Pipeline – Open Cut Restoration

Notes: 2-way vehicular traffic will be maintained with lane restrictions and flagging.

All local access will be maintained.



Where: Les Paul Parkway at S. East Avenue

When: August 2, 2021

Duration: 3-weeks

General Description: Return Flow Pipeline – Trenchless Crossings

Notes: 2-way vehicular traffic will be maintained with lane restrictions and flagging.

All local access will be maintained.



UPDATE **Where:** Les Paul Parkway from S. West Avenue to 1,750' S. Sunset Drive

When: TBD

Duration: TBD

General Description: Return Flow Pipeline – Open Cut



UPDATE **Where:** E. Sunset Drive from Les Paul Parkway to S. Racine Avenue

When: June 28, 2021

Duration: 5-weeks

General Description: Return Flow Pipeline – Open Cut

Notes: Guthrie Road at E. Sunset Drive will be closed to through traffic on July 21st for 2-days.

E. Sunset Drive will be closed to through traffic on July 26th for 11-days.

See greatwateralliance.com for detour information.

2-way vehicular traffic will be maintained with lane restrictions and flagging.

All local access will be maintained



UPDATE **Where:** S. Racine Avenue from E. Sunset Drive to S. Swartz Road

When: June 7, 2021

Duration: 15-weeks

General Description: Return Flow Pipeline – Open Cut

Notes: S. Racine Avenue from Les Paul Parkway to Lawnsdale Road will be closed on August 6th for 3-days.

S. Racine Avenue from Les Paul Parkway to Lawnsdale Road will be closed on August 27th for 3-days.

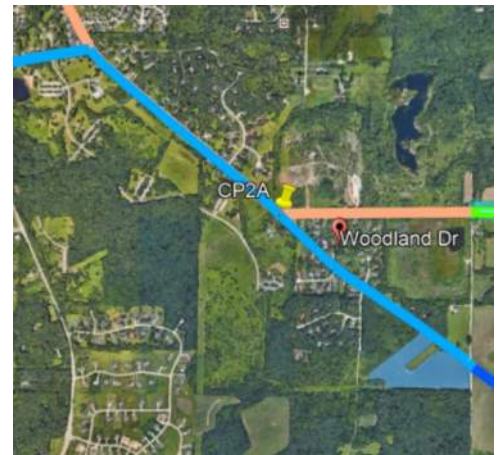
Woodland Drive at S. Racine Avenue will be closed to through traffic on August 19th for 2-days.

S. Swartz Drive at S. Racine Avenue to be closed to through traffic on September 9th for 2-days.

See greatwateralliance.com for detour information.

2-way vehicular traffic will be maintained with lane restrictions and flagging.

All local access will be maintained



City of New Berlin

UPDATE **Where:** WisDOT I-43 from Racine Court to Martin Road
When: TBD
Duration: TBD
General Description: Return Flow Pipeline – Open Cut & Trenchless Crossings
Notes: All local access will be maintained I-43.



Where: WisDOT I-43 at Muskego Creek
When: TBD
Duration: TBD
General Description: Return Flow Pipeline – Trenchless Crossings
Notes: All local access will be maintained on I-43.



Where: Small Road from West of S. Westridge Road to S. Westridge Road
S Westridge Road from Small Road to Moorland Road
When: March 8, 2021
Duration: 12-weeks
General Description: Return Flow Pipeline – Open Cut Construction
Notes: S. Westridge Road closed at Moorland Road on May 18th for 6-weeks.
See greatwateralliance.com for detour information.
2-way traffic will be maintained with lane restrictions and flagging.
All local access will be maintained.



UPDATE Where: Moorland Road from Westridge Drive to Woods Road

When: May 17, 2021

Duration: 14-weeks

General Description: Return Flow Pipeline – Open Cut

Notes: 2-way traffic will be maintained with lane restrictions and flagging.
West Wood Edge Road at Moorland Road will be closed on July 21st for 3 days.
All local access will be maintained.



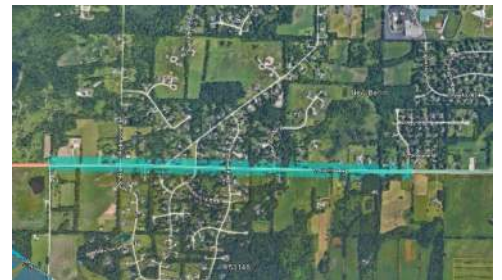
UPDATE Where: Coffee Road from S. Swartz Road to Heide Lane

When: April 5, 2021

Duration: 21-weeks

General Description: Water Supply Pipeline – Open Cut

Notes: Coffee Road from Racine Avenue to Calhoun Road will be closed to through traffic on May 5th for 119-days.
See greatwateralliance.com for detour information.
All local access will be maintained.



UPDATE Where: Coffee Road from Calhoun Road to Moorland Road

When: March 8, 2021

Duration: 26-weeks

General Description: Water Supply Pipeline – Open Cut & Trenchless Crossing
Coffee Road at Calhoun Road right turn lane closure on March 8 for 26-weeks.

Notes: 2-way traffic will be maintained with lane restrictions and flagging.
All local access will be maintained.



UPDATE Where: Coffee Road from Moorland Road to National Avenue

When: July 7, 2021

Duration: 14-weeks

General Description: Water Supply Pipeline – Open Cut & Trenchless Crossing

Notes: Westbound Coffee Road will be closed to through traffic on July 7th for 14-weeks. See greatwateralliance.com for detour information.
All local access will be maintained.



Where: National Avenue from Coffee Road to 124th Avenue

When: June 7, 2021

Duration: 14-weeks

General Description: Water Supply Pipeline – Open Cut

Notes: 2-way traffic will be maintained with lane restrictions and flagging.
All local access will be maintained.



City of New Berlin, City of West Allis

UPDATE Where: National Avenue/Oklahoma Avenue from 128th Street to 122nd Street

When: April 15, 2021

Duration: 14-weeks

General Description: Water Supply Pipeline – Open Cut

Notes: 2-way traffic will be maintained with lane restrictions and flagging.
All local access will be maintained.



City of Muskego

UPDATE Where:	Durham Road from Woods Road to N. Cape Road
When:	June 21, 2021
Duration:	14-weeks
General Description:	Return Flow Pipeline – Open Cut
Notes:	<p>Bella Chasse Parkway closed to through traffic at Durham Road on July 22nd for 2-days</p> <p>Durham Drive closed to through traffic at Durham Drive on August 9th for 3-days</p> <p>Priegel Drive closed to through traffic at Durham Drive on September 7th for 3-days</p> <p>Durham Drive closed to through traffic from Hi View Drive to North Cape Road August 16th for 5-days</p> <p>2-way traffic will be maintained with lane restrictions and flagging.</p> <p>All local access will be maintained.</p>



City of Franklin, Milwaukee County

UPDATE Where:	Ryan Road from N Cape Road to St. Martins Road (STH 100)
When:	May 24, 2021
Duration:	10-weeks
General Description:	Return Flow Pipeline – Open Cut (Clearing and Grubbing) Trenchless Crossing
Notes:	<p>2-way traffic will be maintained with lane restrictions and flagging.</p> <p>All local access will be maintained.</p>



UPDATE Where:	Ryan Road at Loomis Road/STH 36
When:	May 24, 2021
Duration:	4-weeks
General Description:	Return Flow Pipeline – Trenchless Crossing



NEW Where: Ryan Road (STH 100) at Root River (west of 60th Street)

When: July 19, 2021

Duration: 6-weeks

General Description: Return Flow Pipeline – Trenchless Crossing

Notes: 2-way traffic will be maintained with lane restrictions and flagging.

HWY 100 Eastbound lane West of 60th street lane Closure

All local access will be maintained.



NEW Where: 60th Street from Ryan Road (STH 100) to Oakwood Drive

When: August 8, 2021

Duration: 9-week

General Description: Return Flow Pipeline – Open Cut from Root River to 60th Street to Oakwood Drive
Ryan Road eastbound shoulder closure west of 60th Street on August 9th 5-days
60th Street closed at Ryan Road on August 16th for 5-days.

Oakwood Drive at 60th Street will be closed to through traffic on September 30th for 2-days

See greatwateralliance.com for detour information.

All local access will be maintained.



NEW Where: Oakwood Road from 60th Street to 1,200 east of 60th Street

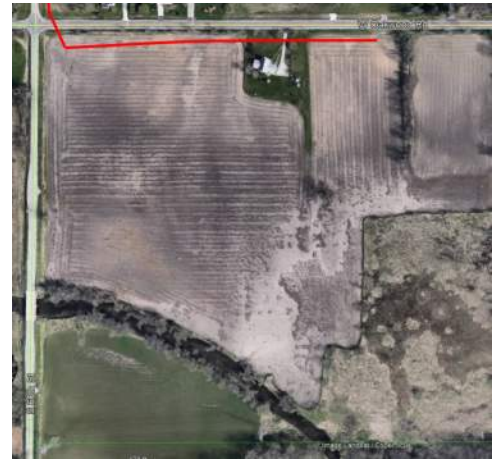
When: October 4, 2021

Duration: 1-week

General Description: Return Flow Pipeline – Open Cut Investigation and Survey



Where: Oakwood Road
When: May 17, 2021
Duration: 15-weeks
General Description: Return Flow Pipeline – Outfall Building



This historic project will bring much needed water to Waukesha, and the Great Water Alliance is committed to completing the work in the most efficient and least disruptive ways possible. Thank you for your patience and cooperation during this construction.



Using Great Lakes Water the Right Way

www.greatwateralliance.com