



Great Lakes Water Supply Program CONSTRUCTION NOTIFICATION

Friday, June 25, 2021

Locations noted below as **NEW** indicates new entries in this Construction Notification

Locations noted below as **UPDATE** indicates updated information has been provided in this Construction Notification

Community Construction Impact

City of Waukesha

Where: Sentry Drive at Clean Water Plant
When: April 28, 2021
Duration: 10-weeks
General Description: Return Flow Pipeline – Trenchless Crossings
Notes: 2-way vehicular traffic will be maintained with lane restrictions and flagging.
All local access will be maintained.



Where: Sentry Drive at Canadian National Railroad
When: May 31, 2021
Duration: 3-weeks
General Description: Return Flow Pipeline – Trenchless Crossing and Open Cut
Notes: 2-way vehicular traffic will be maintained with lane restrictions and flagging.
All local access will be maintained.



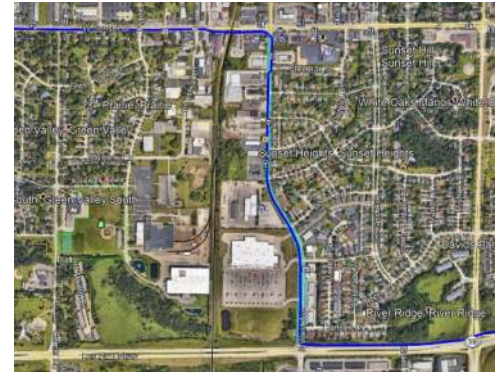
UPDATE **Where:** Sunset Drive at Canadian National Railroad
When: June 8, 2021
Duration: 5-weeks
General Description: Return Flow Pipeline – Trenchless Crossings
Notes: 2-way vehicular traffic will be maintained with lane restrictions and flagging.
All local access will be maintained



Where: Sunset Drive at Sunset Bank Parking
When: July 12, 2021
Duration: 5-weeks
General Description: Return Flow Pipeline – Open Cut
Notes: All local access will be maintained



UPDATE Where: S. West Avenue from Sunset Drive to Les Paul Parkway
When: May 17, 2021
Duration: 10-weeks
General Description: Return Flow Pipeline – Open Cut
Notes: 2-way vehicular traffic will be maintained with lane restrictions and flagging.
 S. West Avenue at Sunset Drive will be closed to through traffic from July 23rd for 8-days.
 S. West Avenue at Les Paul Parkway will be closed to through traffic on July 20th for 3-days
 See greatwateralliance.com for detour information.
 All local access will be maintained.

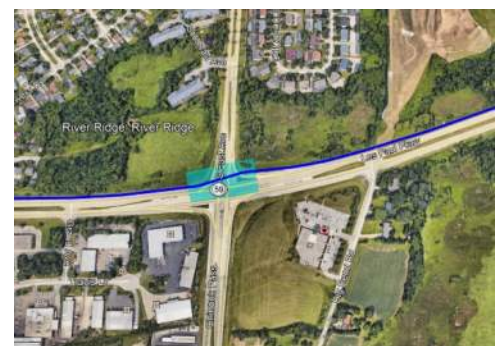


City of Waukesha, Village of Waukesha

UPDATE Where: Sunset Drive from Sentry Drive to S. West Avenue
When: March 10, 2021
Duration: 16-weeks
General Description: Return Flow Pipeline – Open Cut
Notes: 2-way vehicular traffic will be maintained with lane restrictions and flagging.
 All local access will be maintained.



UPDATE Where: Les Paul Parkway at S. East Avenue
When: July 19, 2021
Duration: 4-weeks
General Description: Return Flow Pipeline – Trenchless Crossings at S. East Avenue
Notes: 2-way vehicular traffic will be maintained with lane restrictions and flagging.
 All local access will be maintained.



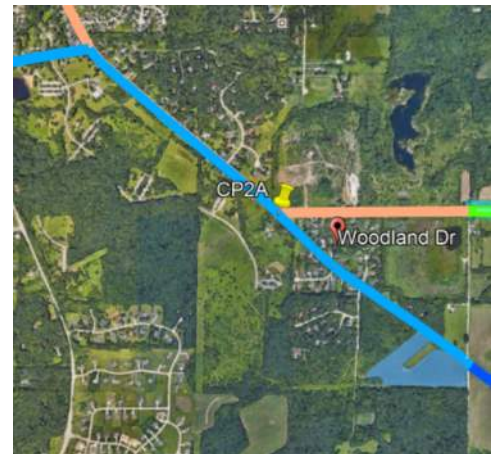
Where: Les Paul Parkway from S. West Avenue to 1,750' S. Sunset Drive
When: June 11, 2021
Duration: 6-weeks
General Description: Return Flow Pipeline – Open Cut



NEW Where: E. Sunset Drive from Les Paul Parkway to S. Racine Avenue
When: June 28, 2021
Duration: 5-weeks
General Description: Return Flow Pipeline – Open Cut
Notes: Milky Way Road to be closed to through traffic on July 7th for 2-days.
Guthrie Road to be closed to through traffic on July 12th for 2-days.
Sunset Drive to be closed to through traffic on July 14th for 14-days.
See greatwateralliance.com for detour information.
2-way vehicular traffic will be maintained with lane restrictions and flagging.
All local access will be maintained



NEW Where: S. Racine Avenue from E. Sunset Drive to S. Swartz Road
When: July 19, 2021
Duration: 9-weeks
General Description: Return Flow Pipeline – Open Cut
Notes: Woodland Drive will be closed to through traffic from August 19th for 2-days.
S. Swartz Drive to be closed to through traffic on August 19th for 2-days.
Racine Avenue from Ann Louis Drive Detour July 16th for 3-days.
Racine Avenue from Canary Drive Detour August 6th for 3-days.
2-way vehicular traffic will be maintained with lane restrictions and flagging.
All local access will be maintained



City of New Berlin

Where: S. Racine Avenue from Swartz Road to I-43
When: January 18, 2021
Duration: 44-weeks
General Description: Return Flow Pipeline – Open Cut
Notes: 2-way vehicular traffic will be maintained with lane restrictions and flagging.
All local access will be maintained.





UPDATE **Where:** WisDOT I-43 from Racine Court to Martin Road
When: TBD
Duration: TBD
General Description: Return Flow Pipeline – Open Cut & Trenchless Crossings
Notes: All local access will be maintained I-43.




Where: WisDOT I-43 at Muskego Creek
When: Delayed TBD
Duration: TBD
General Description: Return Flow Pipeline – Trenchless Crossings
Notes: All local access will be maintained on I-43.



UPDATE Where:	Small Road from West of S. Westridge Road to S. Westridge Road S Westridge Road from Small Road to Moorland Road	
When:	March 8, 2021	
Duration:	12-weeks	
General Description:	Return Flow Pipeline – Open Cut Construction	
Notes:	S. Westridge Road closed at Moorland Road on May 18 th for 6-weeks. See greatwateralliance.com for detour information. 2-way traffic will be maintained with lane restrictions and flagging. All local access will be maintained.	

UPDATE Where:	Moorland Road from Westridge Drive to N. Cape Road	
When:	May 17, 2021	
Duration:	17-weeks	
General Description:	Return Flow Pipeline – Open Cut	
Notes:	2-way traffic will be maintained with lane restrictions and flagging. All local access will be maintained.	

Where:	Coffee Road from S. Swartz Road to Heide Lane	
When:	April 5, 2021	
Duration:	19-weeks	
General Description:	Water Supply Pipeline – Open Cut	
Notes:	Coffee Road from Racine Avenue to Calhoun Road will be closed to through traffic on May 5 th for 72-days. See greatwateralliance.com for detour information. All local access will be maintained.	

Where: Coffee Road from Calhoun Road to Moorland Road
When: March 8, 2021
Duration: 17-weeks
General Description: Water Supply Pipeline – Open Cut & Trenchless Crossing
Notes: 2-way traffic will be maintained with lane restrictions and flagging.
All local access will be maintained.



Where: Coffee Road from Moorland Road to National Avenue
When: July 6, 2021
Duration: 11-weeks
General Description: Water Supply Pipeline – Open Cut & Trenchless Crossing
Notes: Westbound Coffee Road will be closed to through traffic on July 6th for 11-weeks.
See greatwateralliance.com for detour information.
2-way traffic will be maintained with lane restrictions and flagging.
All local access will be maintained.



Where: National Avenue at Acredale Drive
When: April 15, 2021
Duration: 4-weeks
General Description: Water Supply Pipeline – Trenchless Crossing
Notes: Westbound Lane on National Avenue – Lane Closure 4/16 – 6/26
2-way traffic will be maintained with lane restrictions and flagging.
All local access will be maintained.



City of New Berlin, City of West Allis

UPDATE Where: National Avenue/Oklahoma Avenue from 128th Street to 122nd Street
When: April 15, 2021
Duration: 14-weeks
General Description: Water Supply Pipeline – Open Cut
Notes: 2-way traffic will be maintained with lane restrictions and flagging.
All local access will be maintained.



City of Muskego

UPDATE Where:	Durham Road from Woods Road to N. Cape Road
When:	June 21, 2021
Duration:	10-weeks
General Description:	Return Flow Pipeline – Open Cut
Notes:	Bella Chasse Parkway closed to through traffic at Durham Road on July 26 th for 2-days Priegel Drive closed to through traffic at Durham Drive on September 7 th for 3-days 2-way traffic will be maintained with lane restrictions and flagging. All local access will be maintained.



Where:	Moorland Road to Sandalwood Drive
When:	April 19, 2021
Duration:	7-weeks
General Description:	Return Flow Pipeline – Trenchless Crossing
Notes:	2-way traffic will be maintained with lane restrictions and flagging. All local access will be maintained.



City of Franklin, Milwaukee County

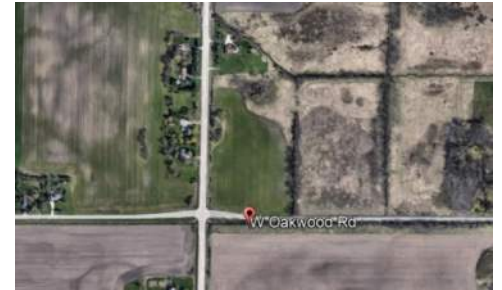
Where:	Ryan Road from N Cape Road to St. Martins Road (STH 100)
When:	May 24, 2021
Duration:	4-weeks
General Description:	Return Flow Pipeline – Open Cut (Clearing and Grubbing)
Notes:	2-way traffic will be maintained with lane restrictions and flagging. All local access will be maintained.



UPDATE Where: Ryan Road at Loomis Road/STH 36
When: May 24, 2021
Duration: 4-weeks
General Description: Return Flow Pipeline – Trenchless Crossing
Notes: 2-way traffic will be maintained with lane restrictions and flagging.
All local access will be maintained.



Where: Oakwood Road
When: May 17, 2021
Duration: 15-weeks
General Description: Return Flow Pipeline – Outfall Building



This historic project will bring much needed water to Waukesha, and the Great Water Alliance is committed to completing the work in the most efficient and least disruptive ways possible. Thank you for your patience and cooperation during this construction.



Using Great Lakes Water the Right Way

www.greatwateralliance.com