



# Great Lakes Water Supply Program CONSTRUCTION NOTIFICATION

Friday, March 12, 2021

## Community Construction Impact

### City of Waukesha

**UPDATE** **Where:** Sentry Drive from Philip Drive to W. Sunset Drive

**When:** December 1, 2020

**Duration:** 14-weeks

**General Description:** Return Flow Pipeline – Open Cut

**Notes:** 2-way vehicular traffic will be maintained with lane restrictions and flagging.  
All local access will be maintained.  
Fox River Trail will be closed to thru-access for pedestrians and bicycles. Please follow posted detour signs for access.



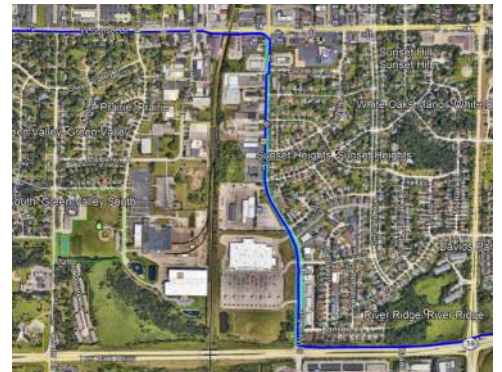
**NEW** **Where:** S. West Avenue from Sunset Drive to Les Paul Parkway

**When:** April 12, 2021

**Duration:** 5-weeks

**General Description:** Return Flow Pipeline – Open Cut

**Notes:** 2-way vehicular traffic will be maintained with lane restrictions and flagging.  
S. West Avenue at Sunset Drive will be closed to through traffic from April 12<sup>th</sup> to April 20<sup>th</sup>. See [greatwateralliance.com](http://greatwateralliance.com) for detour information.  
All local access will be maintained.



## Waukesha County, Village of Waukesha

**UPDATE** **Where:** Les Paul Parkway at S. East Avenue

**When:** March 22, 2021

**Duration:** 3-weeks

**General Description:** Return Flow Pipeline – Trenchless Crossings at S. East Avenue

**Notes:** 2-way vehicular traffic will be maintained with lane restrictions and flagging.  
All local access will be maintained.



**NEW** **Where:** Les Paul Parkway from S. West Avenue to 1,750' S. Sunset Drive

**When:** March 22, 2021

**Duration:** 3-weeks

**General Description:** Return Flow Pipeline – Open Cut

**Notes:** 2-way vehicular traffic will be maintained with lane restrictions and flagging.  
All local access will be maintained



**NEW** **Where:** Sunset Drive from Sentry Drive to S. West Avenue

**When:** March 10, 2021

**Duration:** 6-weeks

**General Description:** Return Flow Pipeline – Open Cut

**Notes:** 2-way vehicular traffic will be maintained with lane restrictions and flagging.  
All local access will be maintained.  
Sunset Drive at Sentry Drive will be closed to through traffic from March 19<sup>st</sup> to March 22<sup>nd</sup>. See [greatwateralliance.com](http://greatwateralliance.com) for detour information.



## City of New Berlin

**UPDATE** **Where:** S. Racine Avenue from Swartz Road to I-43

**When:** January 18, 2021

**Duration:** 17-weeks

**General Description:** Return Flow Pipeline – Open Cut

**Notes:** 2-way vehicular traffic will be maintained with lane restrictions and flagging. All local access will be maintained. W. Lawnsdale Road west of Racine Avenue will be closed to through traffic from March 17<sup>th</sup> to March 20<sup>th</sup>. See [greatwateralliance.com](http://greatwateralliance.com) for detour information.



**NEW** **Where:** I-43 WisDOT from Racine Court to Martin Road

**When:** April 12, 2021

**Duration:** 14-weeks

**General Description:** Return Flow Pipeline – Open Cut & Trenchless Crossing

**Notes:** All access will be maintained on I-43.



**UPDATE** **Where:** WisDOT I-43 at Martin Road

**When:** February 4, 2021

**Duration:** 9-weeks

**General Description:** Return Flow Pipeline – Trenchless Crossing

**Notes:** 2-way traffic will be maintained on Martin Road, with lane restrictions and flagging.



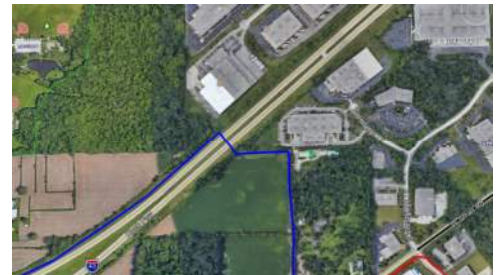
**UPDATE** **Where:** WisDOT I-43 near mile marker 56.2


**When:** March 15, 2021


**Duration:** 4-weeks


**General Description:** Return Flow Pipeline – Trenchless Crossing

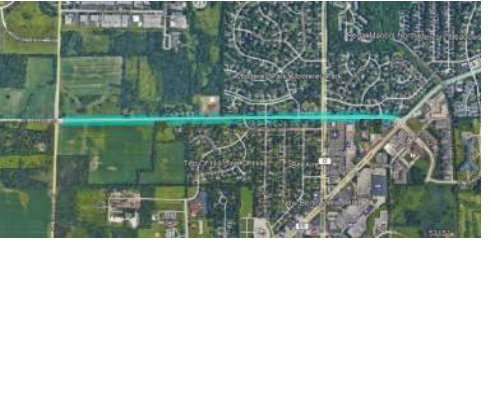
**Notes:** All access will be maintained on I-43.



<b>NEW Where:</b>	Private Easement from I-43 WisDOT to Small Road	
<b>When:</b>	March 10, 2021	
<b>Duration:</b>	2-weeks	
<b>General Description:</b>	Return Flow Pipeline – Open Cut Construction	
<b>Notes:</b>	All local access will be maintained.	

<b>Where:</b>	Coffee Road from Heide Lane to Calhoun Road	
<b>When:</b>	January 11, 2021	
<b>Duration:</b>	13-weeks	
<b>General Description:</b>	Water Supply Pipeline – Open Cut & Trenchless Crossing	
<b>Notes:</b>	2-way traffic will be maintained with lane restrictions and flagging. All local access will be maintained.	

<b>NEW Where:</b>	Coffee Road from S. Swartz Road to Heide Lane	
<b>When:</b>	April 5, 2021	
<b>Duration:</b>	10-weeks	
<b>General Description:</b>	Water Supply Pipeline – Open Cut	
<b>Notes:</b>	2-way traffic will be maintained with lane restrictions and flagging. All local access will be maintained.	

<b>NEW Where:</b>	Coffee Road from Calhoun Road to National Avenue	
<b>When:</b>	March 8, 2021	
<b>Duration:</b>	12-weeks	
<b>General Description:</b>	Water Supply Pipeline – Open Cut & Trenchless Crossing	
<b>Notes:</b>	2-way traffic will be maintained with lane restrictions and flagging. All local access will be maintained.	

**UPDATE Where:** Small Road from West of S. Westridge Road to S. Westridge Road  
 S Westridge Road from Small Road to Moorland Road

**When:** March 8, 2021

**Duration:** 4-weeks

**General Description:** Return Flow Pipeline – Open Cut Construction

**Notes:** S. Westridge Road closed at Small Road on April 28<sup>th</sup> for 3-days. See [greatwateralliance.com](http://greatwateralliance.com) for detour information.  
 2-way traffic will be maintained with lane restrictions and flagging for the remainder of this work.  
 All local access will be maintained.



**UPDATE Where:** Moorland Road at College Avenue

**When:** January 26, 2021

**Duration:** 6-weeks

**General Description:** Return Flow Pipeline – Trenchless Crossing

**Notes:** 2-way traffic will be maintained with lane restrictions and flagging.  
 All local access will be maintained.



### City of Muskego

**UPDATE Where:** Moorland Road at Commerce Center Drive

**When:** February 19, 2021

**Duration:** 4-weeks

**General Description:** Return Flow Pipeline – Trenchless Crossing

**Notes:** 2-way traffic will be maintained with lane restrictions and flagging.  
 All local access will be maintained.



### City of Franklin

**UPDATE Where:** Ryan Road at Loomis Road/STH 36

**When:** March 22, 2021

**Duration:** 4-weeks

**General Description:** Return Flow Pipeline – Trenchless Crossing

**Notes:** 2-way traffic will be maintained with lane restrictions and flagging.  
 All local access will be maintained.



This historic project will bring much needed water to Waukesha, and the Great Water Alliance is committed to completing the work in the most efficient and least disruptive ways possible. Thank you for your patience and cooperation during this construction.



*Using Great Lakes Water the Right Way*

[www.greatwateralliance.com](http://www.greatwateralliance.com)