

February 12, 2021

**Subject:** Great Water Alliance Great Lakes Water Supply Program Construction Update

Good Afternoon,

Construction continues for the Great Water Alliance Great Lakes Water Supply Program to bring sustainable water from Lake Michigan to Waukesha. The following is an update on the current and upcoming construction.

Note: If an item is new or updated from the previous report, it will be flagged with “**New**” or “**Update**” highlight by that item.

## Community Construction Impact

### City of Waukesha

<b>UPDATE Where:</b>	Sentry Drive from Philip Drive to W. Sunset Drive
<b>When:</b>	December 1, 2020
<b>Duration:</b>	12-weeks
<b>General Description:</b>	Return Flow Pipeline – Open Cut & Trenchless Construction
<b>Notes:</b>	2-way vehicular traffic will be maintained with lane restrictions and flagging. All local access will be maintained. Fox River Trail will be closed to thru-access for pedestrians and bicycles. Please follow posted detour signs for access.



### Waukesha County, Village of Waukesha

<b>Where:</b>	Les Paul Parkway from S. East Avenue to E. Sunset Drive
<b>When:</b>	January 11, 2021
<b>Duration:</b>	10-weeks
<b>General Description:</b>	Return Flow Pipeline – Trenchless Crossings at S. East Avenue and near Sunset Drive
<b>Notes:</b>	2-way traffic will be maintained with lane restrictions and flagging. All local access will be maintained.



### City of New Berlin

<b>UPDATE Where:</b>	S. Racine Avenue from Swartz Road to 1,200' South of W. Lawnsdale Road
<b>When:</b>	January 18, 2021
<b>Duration:</b>	8-weeks

**General Description:** Return Flow Pipeline – Open Cut Construction

**Notes:** Racine Avenue, from Les Paul Parkway to National Avenue, will be closed to through traffic from February 18<sup>th</sup> at 5:00 PM to February 22<sup>nd</sup> at 5:00 AM. See [greatwateralliance.com](http://greatwateralliance.com) for detour information. 2-way traffic will be maintained with lane restrictions and flagging. All local access will be maintained.



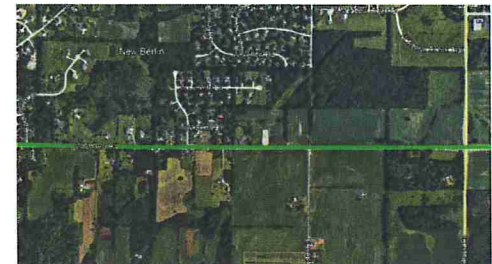
**Where:** Coffee Road from Heide Lane to Calhoun Road

**When:** January 11, 2021

**Duration:** 6-weeks

**General Description:** Water Supply Pipeline – Open Cut Construction

**Notes:** 2-way traffic will be maintained with lane restrictions and flagging. All local access will be maintained.



**NEW** **Where:** WisDOT I-43 at Martin Road

**When:** February 4, 2021

**Duration:** 8-weeks

**General Description:** Return Flow Pipeline – Trenchless Crossing

**Notes:** 2-way traffic will be maintained on Martin Road, with lane restrictions and flagging.



**UPDATE** **Where:** WisDOT I-43 near mile marker 56.2

**When:** Delayed/Rescheduled

**Duration:**

**General Description:** Return Flow Pipeline – Trenchless Crossing

**Notes:** 2-way traffic will be maintained.



**UPDATE** **Where:** Small Road from West of S. Westridge Road to S. Westridge Road  
S Westridge Road from Small Road to Moorland Road

**When:** February 22, 2021

**Duration:** 4-weeks



**General Description:** Return Flow Pipeline – Open Cut Construction

**Notes:** S. Westridge Road closed at Small Road on February 3<sup>rd</sup> for 3-days. See [greatwateralliance.com](http://greatwateralliance.com) for detour information. 2-way traffic will be maintained with lane restrictions and flagging for the remainder of this work. All local access will be maintained.



**NEW Where:** Moorland Road at College Avenue

**When:** January 26, 2021

**Duration:** 3-weeks

**General Description:** Return Flow Pipeline – Trenchless Construction

**Notes:** 2-way traffic will be maintained with lane restrictions and flagging. All local access will be maintained.



### City of Muskego

**UPDATE Where:** Moorland Road at Commerce Center Drive

**When:** February 22, 2021

**Duration:** 3-weeks

**General Description:** Return Flow Pipeline – Trenchless Construction

**Notes:** 2-way traffic will be maintained with lane restrictions and flagging. All local access will be maintained.



This historic project will bring much needed water to Waukesha, and the Great Water Alliance is committed to completing the work in the most efficient and least disruptive ways possible. Thank you for your patience and cooperation during this construction.



Using Great Lakes Water the Right Way

[www.greatwateralliance.com](http://www.greatwateralliance.com)